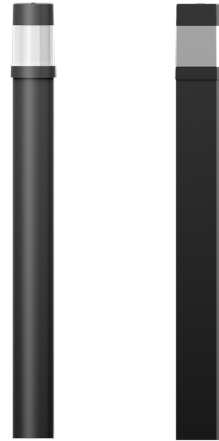


BAMBOO



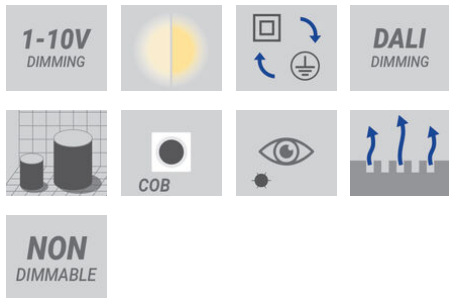
Pillar design soft illumination bollard fixture. Commercial level quality and performance within a domestic aesthetic.



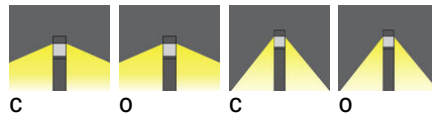
Luminaire Structure

- Die-cast aluminium housing
- Extruded aluminium column
- Pre-treated before powder coating ensuring high corrosion resistance
- Single cable entry
- Stainless steel fasteners in grade 304 with zinc flake coating (ZFC)
- Durable silicone rubber gasket
- Clear or opal UV-stabilised polycarbonate diffuser
- Integral control gear

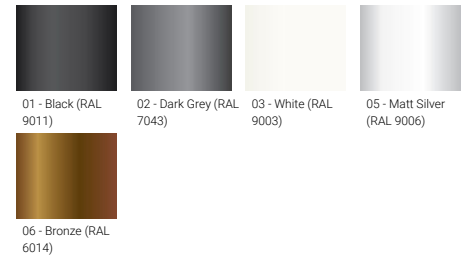
Feature



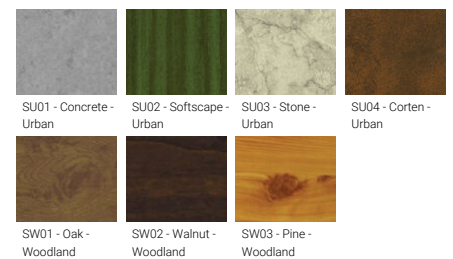
Optic



Product colour



Special finishes upon request





BAMBOO

Technical information

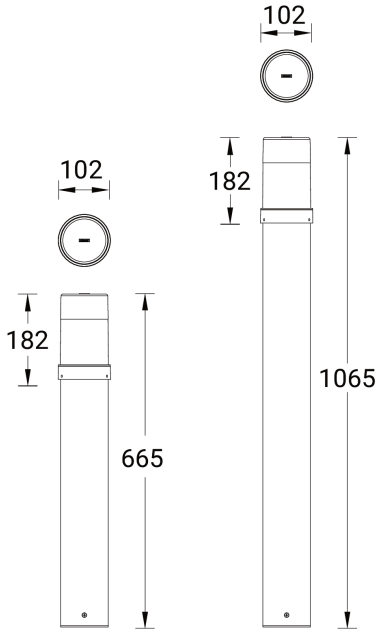
	Model number	Light source	Power	Lumen	Optic	CCT / CRI	Dimming type	Weight
102x102 mm - 1068 mm - Square								
BAMBOO 4	BA-10643	1 COB	15 W	307 - 463 lm	C [121°x 139°], O [360°]	3000K CRI80, 4000K CRI80	On/Off, 1-10V, DALI	4.1 kg
102x102 mm - 668 mm - Square								
BAMBOO 4	BA-10633	1 COB	15 W	307 - 463 lm	C [146°x 119°], O [360°]	3000K CRI80, 4000K CRI80	On/Off, 1-10V, DALI	3.1 kg
Ø102 - 1065 mm - Round								
BAMBOO 3	BA-10623	1 COB	15 W	355 - 480 lm	C [121°x 139°], O [360°]	3000K CRI80, 4000K CRI80	On/Off, 1-10V, DALI	3.5 kg
Ø102 - 665 mm - Round								
BAMBOO 3	BA-10613	1 COB	15 W	355 - 480 lm	C [146°x 119°], O [360°]	3000K CRI80, 4000K CRI80	On/Off, 1-10V, DALI	2.5 kg

Accessories

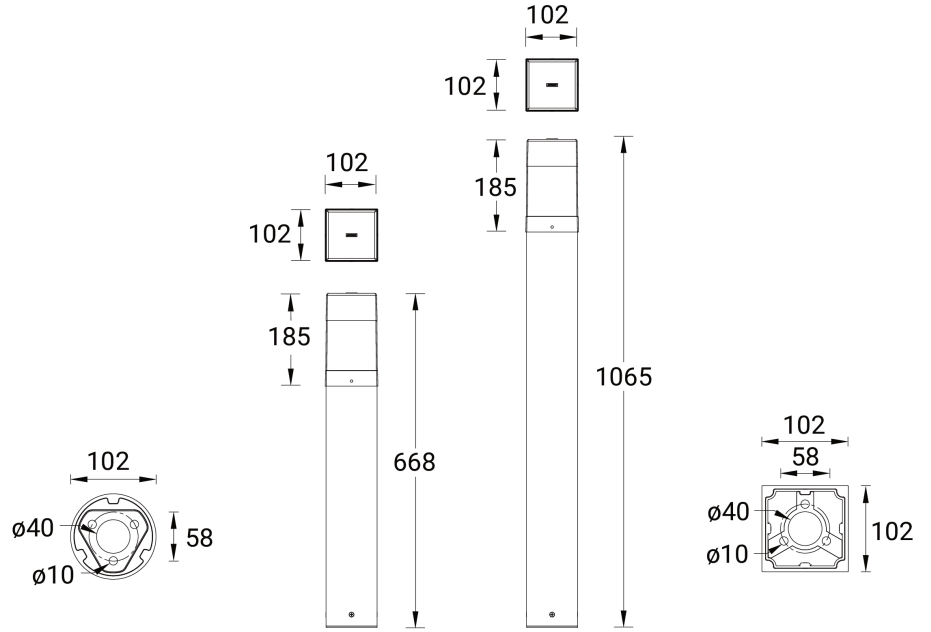
	 Anchor bolt A10791	 DALI Control System Control-DALI
BA-10613	•	•
BA-10623	•	•
BA-10633	•	•
BA-10643	•	•

BAMBOO

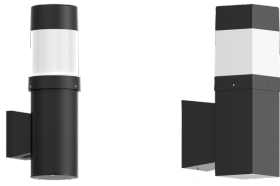
BA-10613, BA-10623



BA-10633, BA-10643



BAMBOO



BAMBOO

Surface facade luminaires

Pillar design soft illumination wall fixture.
Commercial level quality and performance within
a domestic aesthetic.

<https://www.ligman.com/bamboo-surface-facade-luminaires-ba-su3/>