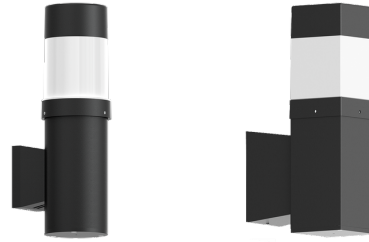


BAMBOO



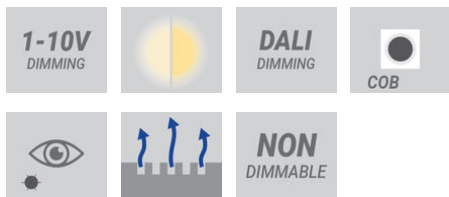
Pillar design soft illumination wall fixture.
Commercial level quality and performance within a domestic aesthetic.



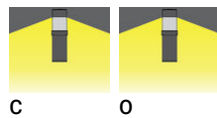
Luminaire Structure

- Die-cast aluminium housing
- Extruded aluminium column
- Pre-treated before powder coating ensuring high corrosion resistance
- Single cable entry
- Stainless steel fasteners in grade 304 with zinc flake coating (ZFC)
- Durable silicone rubber gasket
- Clear prismatic acrylic PMMA diffuser or opal UV-stabilised polycarbonate diffuser
- Integral control gear
- Optional surface mounting box for easy wiring or conduit connection when wiring from behind is not possible

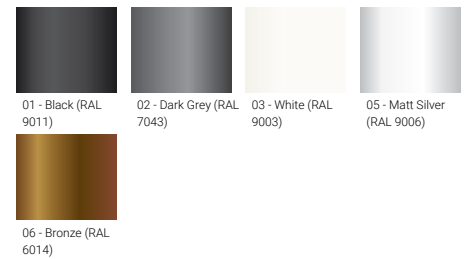
Feature



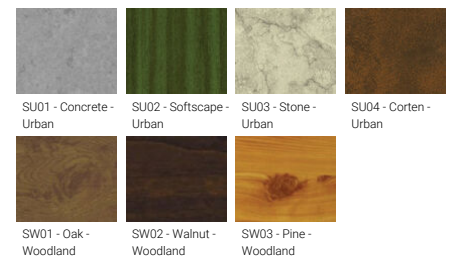
Optic



Product colour



Special finishes upon request






BAMBOO

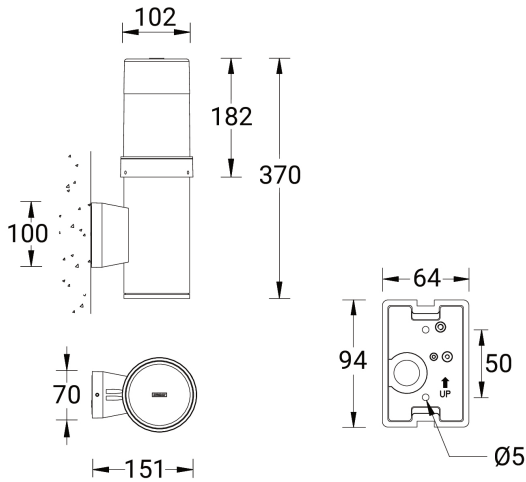
Technical information

	Model number	Light source	Power	Lumen	Optic	CCT / CRI	Dimming type	Weight
Round								
BAMBOO 1	BA-31166	1 COB	14 W	355 - 480 lm	C [146°x 119°], O [360°]	3000K CRI80, 4000K CRI80	On/Off, 1-10V, DALI	2.3 kg
Square								
BAMBOO 2	BA-31176	1 COB	14 W	307 - 463 lm	C [121°x 139°], O [360°]	3000K CRI80, 4000K CRI80	On/Off, 1-10V, DALI	3.3 kg

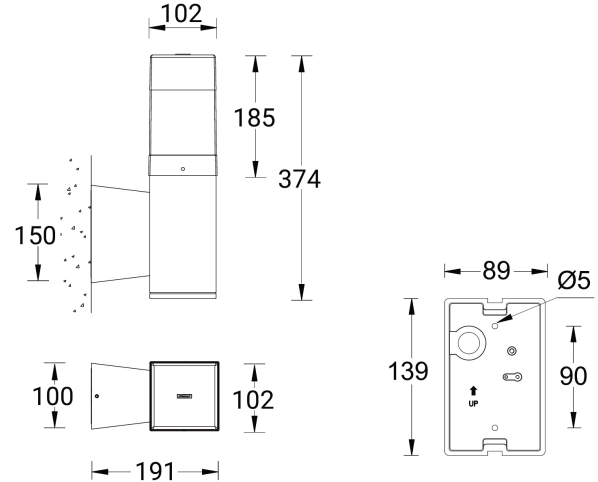
Accessories

			
	DALI Control System Control-DALI	Surface mounting box for easy cabling (BAMBOO 1) SCE-BAMBOO-1	Surface mounting box for easy cabling (BAMBOO 2) SCE-BAMBOO-2
BA-31166	•	•	
BA-31176	•		•

BA-31166



BA-31176



BAMBOO



BAMBOO
Bollards

Pillar design soft illumination bollard fixture.
Commercial level quality and performance within
a domestic aesthetic.

<https://www.ligman.com/bamboo-bollards-ba-b03/>