

NORDSTROM



Square surface architectural floodlight projector range, with a comprehensive selection of beam distributions.

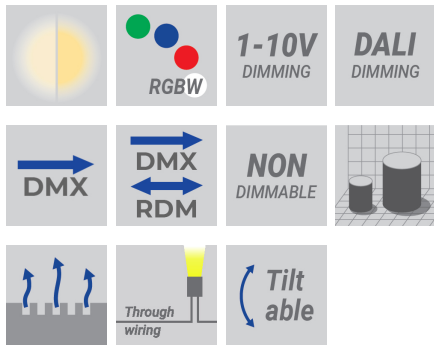


microPrim™

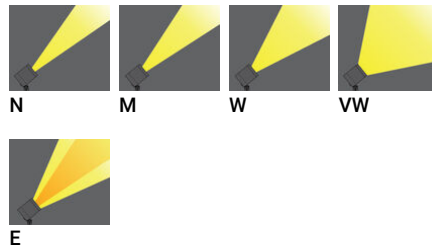
Luminaire Structure

- Die-cast aluminium housing
- Pre-treated before powder coating ensuring high corrosion resistance
- Thermal heat dissipation body
- Single cable entry, through wiring upon request
- Stainless steel fasteners in grade 304 with zinc flake coating (ZFC)
- Durable silicone rubber gasket
- High-efficiency PMMA lens
- Clear toughened glass
- Integral control gear for NOD-50001, NOD-50011, NOD-50021, NOD-50022, NOD-50031, NOD-50032
- Remote driver is included for constant voltage (CV) products

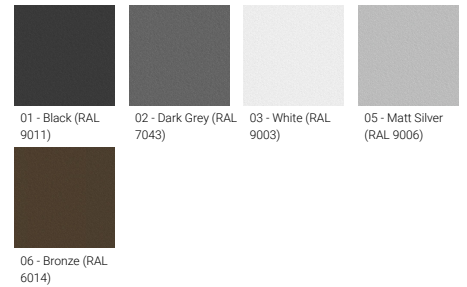
Feature



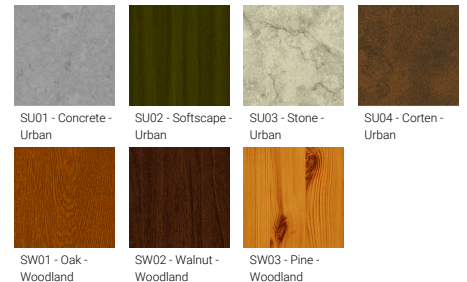
Optic



Product colour



Special finishes upon request



NORDSTROM

Technical information

	Model number	Light source	Power	Lumen	Optic	CCT / CRI	Dimming type	Weight	
Integral control gear - 120x120 mm - Class I									
NORDSTROM 3	NOD-50021	9 LED	21 W	1921 - 2364 lm	N [10°], M [17°], W [34°], VW [70°], E [43°x11°]	3000K CRI80, 4000K CRI80	On/Off, DALI	2.7 kg	
Integral control gear - 120x120 mm - Class I - RGBW									
NORDSTROM 3	NOD-50022	8 LED	22 W	853 - 1133 lm	N [8°], M [17°], W [26°], VW [65°], E [43°x11°]	RGBW30, RGBW40	DMX, DMX/RDM	2.7 kg	
Integral control gear - 145x145 mm - Class I									
NORDSTROM 4	NOD-50031	16 LED	35 W	3263 - 4110 lm	N [10°], M [16°], W [33°], VW [72°], E [43°x11°]	3000K CRI80, 4000K CRI80	On/Off, 1-10V, DALI	3.6 kg	
Integral control gear - 145x145 mm - Class I - RGBW									
NORDSTROM 4	NOD-50032	16 LED	28 W	1322 - 1600 lm	N [8°], M [17°], W [26°], VW [65°], E [43°x11°]	RGBW30, RGBW40	DMX, DMX/RDM	3.6 kg	
Integral control gear - 62x62 mm - Class I									
NORDSTROM 1	NOD-50001	1 LED	3 W	209 - 262 lm	N [10°], M [16°], W [32°], VW [70°], E [42°x11°]	3000K CRI80, 4000K CRI80	On/Off	0.9 kg	
Integral control gear - 82x82 mm - Class I									
NORDSTROM 2	NOD-50011	4 LED	10 W	906 - 1112 lm	N [10°], M [16°], W [34°], VW [68°], E [43°x11°]	3000K CRI80, 4000K CRI80	On/Off	1.3 kg	
With remote driver IP-rated - Constant voltage (CV) 24 V - 62x62 mm - Class III - RGBW									
NORDSTROM 1	NOD-50002	1 LED	6 W	166 - 170 lm	M [34°]	RGBW30, RGBW40	DMX, DMX/RDM	0.9 kg	
With remote driver IP-rated - Constant voltage (CV) 24 V - 82x82 mm - Class III - RGBW									
NORDSTROM 2	NOD-50012	4 LED	13 W	406 - 520 lm	N [8°], M [17°], W [26°], VW [65°], E [43°x11°]	RGBW30, RGBW40	DMX, DMX/RDM	1.3 kg	

Accessory

	Ground spike A50441	Ground spike A50641	Linear spread lens A51114	Ground spike A51141	Linear spread lens A51214	Linear spread lens A51314	Linear spread lens A51414
NOD-50001			.	.			
NOD-50002			.	.			
NOD-50011		.			.		
NOD-50012		.			.		
NOD-50021	.					.	
NOD-50022	.					.	
NOD-50031	.						.
NOD-50032	.						.

We reserve the right to make technical and design changes.

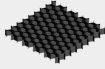
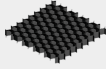
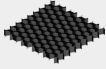
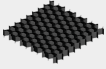



07:05, 02-04-2026





<https://www.ligman.com/nordstrom-floodlights-projectors-no-pr>
3/

THAILAND
LIGMAN Lighting Co.,Ltd.
17/2 Moo 4, Monthong, Bang Nam Prio,
24150 Chachoengsao - Thailand
info@ligman.com



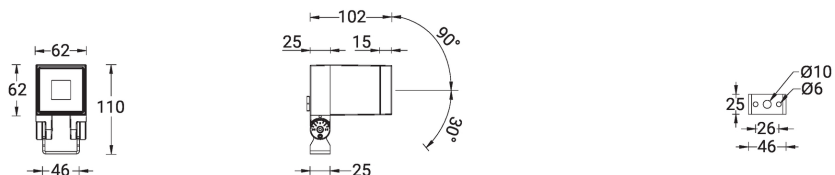
NORDSTROM

	 Honeycomb louvre A51821	 Honeycomb louvre A51921	 Honeycomb louvre A52021	 Honeycomb louvre A52121	 Anti-glare visor A52831	 Anti-glare visor A52931	 Anti-glare visor A53031
NOD-50001	•				•		
NOD-50002	•				•		
NOD-50011		•				•	
NOD-50012		•				•	
NOD-50021			•				•
NOD-50022			•				•
NOD-50031				•			
NOD-50032				•			

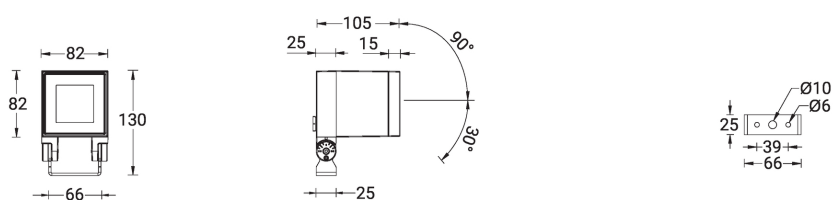
	 Anti-glare visor A53131	 DALI Control System Control-DALI	 DMX Control System Control-DMX	 DMX/RDM Control System Control-DMX-RDM
NOD-50001				
NOD-50002			•	•
NOD-50011				
NOD-50012			•	•
NOD-50021		•		
NOD-50022			•	•
NOD-50031	•	•		
NOD-50032	•		•	•

NORDSTROM

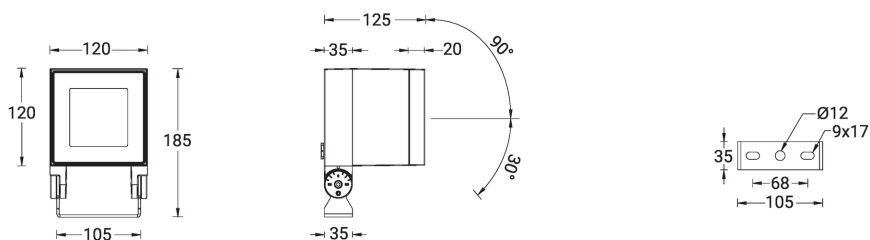
NOD-50001, NOD-50002



NOD-50011, NOD-50012



NOD-50021, NOD-50022



NOD-50031, NOD-50032

