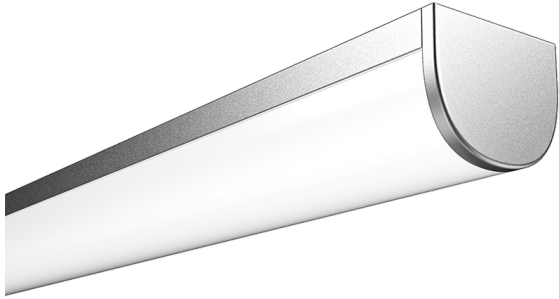


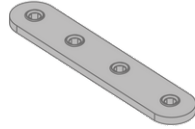
A80035 - Surface or Corner mounted (A80035)**Product description**

- Surface or Corner mounted
- Width 18.5 mm x Height 15.5 mm
- Curved frosted PMMA diffuser
- Anodised aluminium
- Self-countersinking screw design

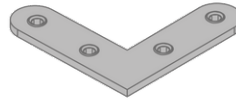
Technical information

A80035 - Surface or Corner mounted (A80035)**Accessories**

End cap for A80035
A80035-EC



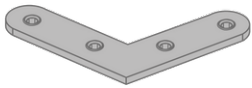
Joiner - Straight
A80055



Joiner - 90° Corner
A80056



Curved PMMA diffuser for
A80035, A80038
A80065



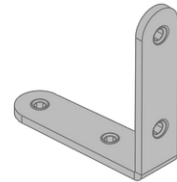
Joiner - 120° Corner
A80057



Joiner - 135° Corner
A80074



Joiner - 144° Corner
A80075



Joiner - Vertical to Horizontal
A80058



X Cross
A80076