

**A80037 - Surface or Corner mounted (A80037)****Product description**

- Surface or Corner mounted
- Width 29 mm x Height 29 mm
- Prismatic diamond cut design diffuser (continuous)
- Anodised aluminium
- 45° angle illumination

**Technical information**

**A80037 - Surface or Corner mounted (A80037)****Accessories**

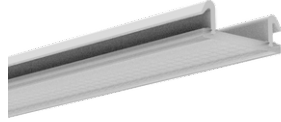
---



---

End cap for A80037  
**A80037-EC**

---



---

Diffuser prismatic continuous -  
Diamond cut - 17 mm  
**A80062**

---