

A80038 - Surface mounted or Suspended (A80038)**Product description**

- Surface mounted or Suspended
- Width 18.5 mm x Height 34 mm
- Curved frosted PMMA diffuser
- Anodised aluminium
- Self-countersinking screw design

Technical information

A80038 - Surface mounted or Suspended (A80038)**Accessories**

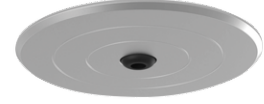
End cap for A80038
A80038-EC



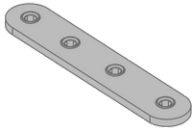
Suspension wire with base - 4 m
A80061



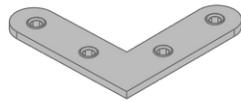
Cable base - Surface-mounted
A80051



Cable base - Flash-mounted
A80052



Joiner - Straight
A80055



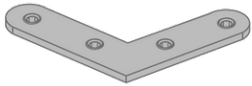
Joiner - 90° Corner
A80056



Seismic safety wire
A80073



Curved PMMA diffuser for
A80035, A80038
A80065



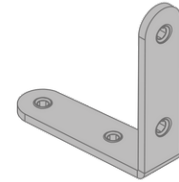
Joiner - 120° Corner
A80057



Joiner - 135° Corner
A80074



Joiner - 144° Corner
A80075



Joiner - Vertical to Horizontal
A80058



X Cross
A80076