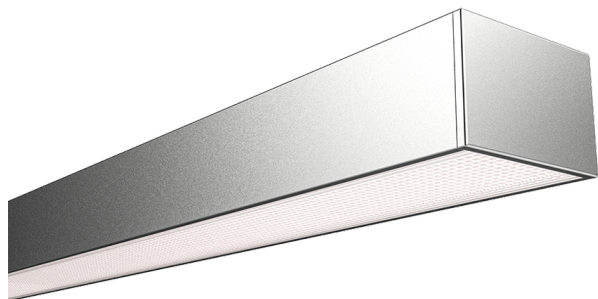


**A80040 - Surface mounted or Suspended (A80040)****Product description**

- Surface mounted or Suspended
- Width 35 mm x Height 24 mm
- Prismatic diamond cut design diffuser (continuous)
- Anodised aluminium

**Technical information**

**A80040 - Surface mounted or Suspended (A80040)****Accessories**

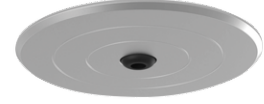
End cap for A80040  
**A80040-EC**



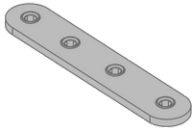
Suspension wire with base - 4 m  
**A80061**



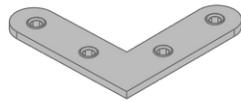
Cable base - Surface-mounted  
**A80051**



Cable base - Flash-mounted  
**A80052**



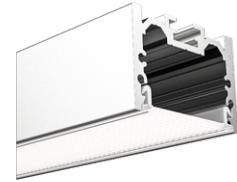
Joiner - Straight  
**A80055**



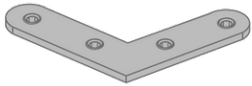
Joiner - 90° Corner  
**A80056**



Seismic safety wire  
**A80073**



Diffuser prismatic continuous -  
Diamond cut - 30 mm  
**A80063**



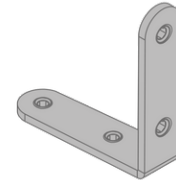
Joiner - 120° Corner  
**A80057**



Joiner - 135° Corner  
**A80074**



Joiner - 144° Corner  
**A80075**



Joiner - Vertical to Horizontal  
**A80058**



X Cross  
**A80076**