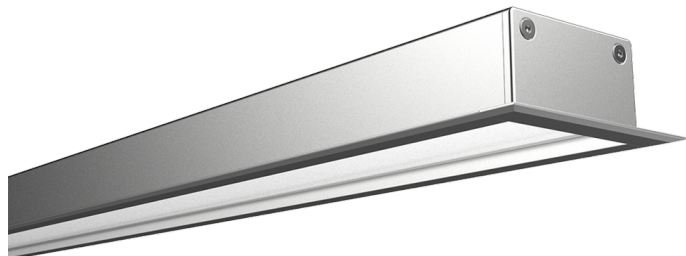


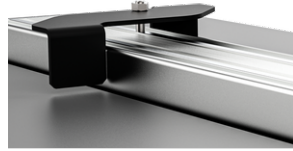
A80042 - Recessed (A80042)**Product description**

- Recessed via mounting clip or screw-fix
- Width 70 mm x Height 30.9 mm (with 3 mm trim)
- Satin prismatic diamond cut design diffuser (continuous)
- Anodised aluminium

Technical information

A80042 - Recessed (A80042)**Accessories**

End cap for A80042
A80042-EC



Mounting clip for A80042
A80042-MC



Joiner - Large - Straight
A80077



Joiner - Large - 90° Corner
A80078



Diffuser prismatic continuous -
Diamond cut - 48 mm
A80064



Joiner - Large - 120° Corner
A80079



Joiner - Large - 135° Corner
A80080



Joiner - Large - 144° Corner
A80081