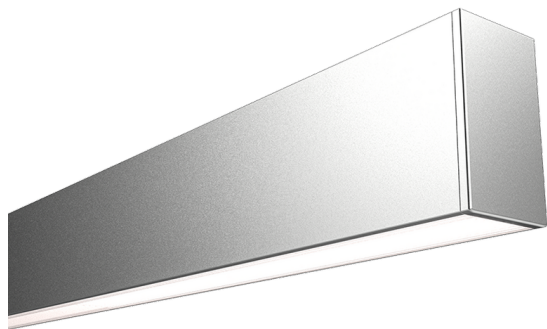


**A80047 - Surface mounted, Suspended or Wall mounted (A80047)****Product description**

- Surface mounted, Suspended or Wall mounted (via wall mount system)
- Width 20 mm x Height 35 mm
- Prismatic diamond cut design diffuser (continuous)
- Anodised aluminium
- Self-countersinking screw design

**Technical information**

**A80047 - Surface mounted, Suspended or Wall mounted (A80047)****Accessories**

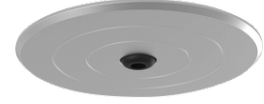
End cap for A80047  
**A80047-EC**



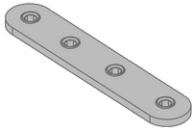
Suspension wire with base - 4 m  
**A80061**



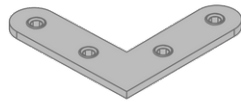
Cable base - Surface-mounted  
**A80051**



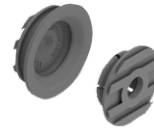
Cable base - Flash-mounted  
**A80052**



Joiner - Straight  
**A80055**



Joiner - 90° Corner  
**A80056**



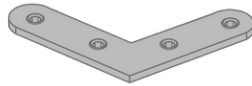
Linear wall mount system  
**A80072**



Seismic safety wire  
**A80073**



Diffuser prismatic continuous -  
Diamond cut - 17 mm  
**A80062**



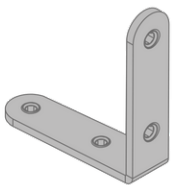
Joiner - 120° Corner  
**A80057**



Joiner - 135° Corner  
**A80074**



Joiner - 144° Corner  
**A80075**



Joiner - Vertical to Horizontal  
**A80058**



X Cross  
**A80076**



Suspension wire with base - 4 m  
- Y type  
**A80061-Y**