

ABACUS 7 (AB-30041)



Product description

Small



Luminaire Structure

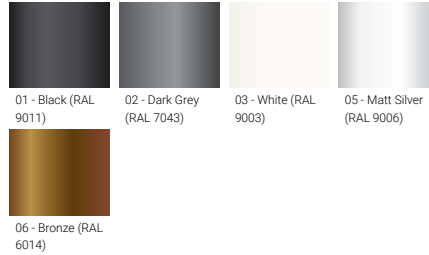
- Die-cast aluminium frame and body
- Pre-treated before powder coating ensuring high corrosion resistance
- Single cable entry
- Stainless steel fasteners in grade 304 with zinc flake coating (ZFC)
- Durable silicone rubber gasket
- Frosted glass diffuser
- Integral control gear
- Optional surface mounting box for easy wiring or conduit connection when wiring from behind is not possible

Optic

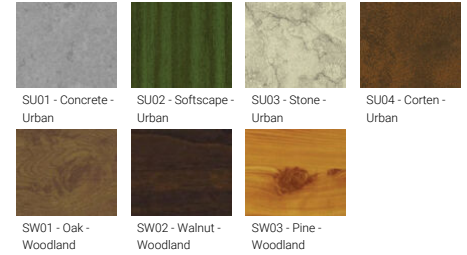


G

Product colour



Special finishes upon request

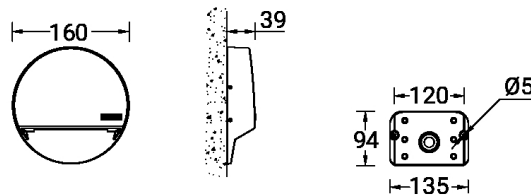


ABACUS 7 (AB-30041)

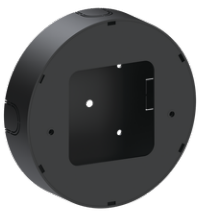
Technical information

Material	Aluminium	Optic value	92°x55°	Operating temperature	-20 °C to 40 °C
Light source	12 LED	CCT / CRI	3000K CRI80, 4000K CRI80	Through wiring	Single cable entry
Power	7 W	Bug	B0-U1-G0	Lens / Reflector / Optic	Frosted glass diffuser
Lumen	315 - 329 lm	ULR	1%	MacAdam Ellipse	3 SDCM
Efficacy	45 - 47 lm/W	ULOR	1%	Lifetime L90B10 (hours)	> 23,000
Driver option	Integral control gear	CIE flux code n°3	98	Lifetime L80B10 (hours)	> 45,000
Driver	Constant current (CC)	Dimming type	On/Off	Lifetime L80B50 (hours)	> 49,000
Input voltage	220-240 V 50/60 Hz		Black, Dark Grey, White, Matt Silver, Bronze, Concrete - Urban, Softscape - Urban, Stone - Urban, Corten - Urban, Oak - Woodland, Walnut - Woodland, Pine - Woodland	Variants (On/Off)	Compatible with EN/ IEC 60598-2-22: Suitable for emergency installations as central supply, non-maintained (Z0)
Optic	G	Weight	0.9 kg		

AB-30041



Accessories



Surface mounting box for easy cabling (ABACUS 7)
SCE-ABACUS-7