

**ARIZONA 3 (AR-20991-LC)**



**Product description**

Ø225 mm - Supplied with specific 3 m cylindrical, straight aluminium pole: APD130225-AR-20991 - 4 projectors - LIGHTCONNECT™



**LIGHT  
CONNECT™**

**microVOS™**  
TECHNOLOGY

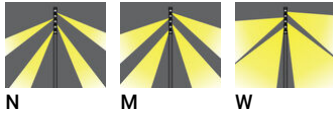
**Luminaire Structure**

- Die-cast aluminium housing
- Extruded aluminium column
- Pre-treated before powder coating ensuring high corrosion resistance
- Single cable entry
- One IP68 connector supplied with 0.2 m of 3x1.0 sqmm outdoor cable

- Stainless steel fasteners in grade 304 with zinc flake coating (ZFC)
- Durable silicone rubber gasket
- High-efficiency PMMA lens
- Clear acrylic PMMA diffuser
- Integral control gear

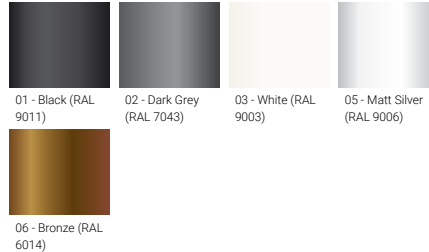
- Maximum wind load resistance is 140 km/h
- Surge protection 10kV
- For ARIZONA 8, the luminaire and the lighting pole with illuminated decorative graphic are controlled separately. Upon request, they can be controlled together by the same protocol, either DMX or DALI.

**Optic**



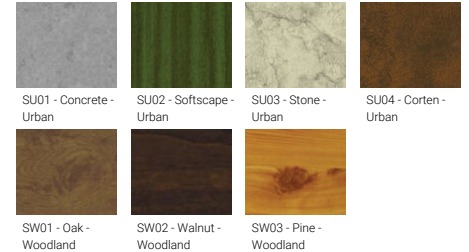
**N M W**

**Product colour**



01 - Black (RAL 9011)    02 - Dark Grey (RAL 7043)    03 - White (RAL 9003)    05 - Matt Silver (RAL 9006)  
06 - Bronze (RAL 6014)

**Special finishes upon request**



SU01 - Concrete - Urban    SU02 - Softscape - Urban    SU03 - Stone - Urban    SU04 - Corten - Urban  
SW01 - Oak - Woodland    SW02 - Walnut - Woodland    SW03 - Pine - Woodland

**ARIZONA 3 (AR-20991-LC)**

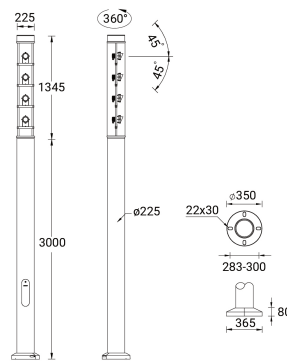
**Technical information**

<b>Material</b>	Aluminium
<b>Light source</b>	4 x 7 LED
<b>Power</b>	50 W
<b>Lumen</b>	3752 - 4396 lm
<b>Efficacy</b>	75 - 88 lm/W
<b>Driver option</b>	Integral control gear
<b>Driver</b>	Constant current (CC)
<b>Input voltage</b>	220-240 V 50/60 Hz

<b>Optic</b>	N, M, W
<b>Optic value</b>	16°, 26°, 46°
<b>CCT / CRI</b>	3000K CRI80, 4000K CRI80
<b>Bug</b>	B1-U1-G0
<b>ULR</b>	0%
<b>ULOR</b>	0%
<b>CIE flux code n°3</b>	100, 99
<b>Dimming type</b>	DALI

<b>Product colours</b>	Black, Dark Grey, White, Matt Silver, Bronze, Concrete - Urban, Softscape - Urban, Stone - Urban, Corten - Urban, Oak - Woodland, Walnut - Woodland, Pine - Woodland
<b>Weight</b>	39.5 kg
<b>Operating temperature</b>	-20 °C to 40 °C
<b>Cable</b>	One IP68 connector supplied with 0.2 m of 3x1.0 sqmm outdoor cable
<b>Through wiring</b>	Single cable entry
<b>Lens / Reflector / Optic</b>	High-efficiency PMMA lens, Clear acrylic PMMA diffuser
<b>Variants (DALI)</b>	Compatible with EN/ IEC 60598-2-22: Suitable for emergency installations as central supply, non-maintained (Z0)

AR-20991



**Accessories**



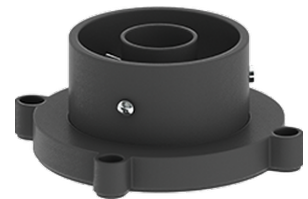
Root mount kit  
**A20791**



Circuit breaker box IP44  
**A21291**



Linear spread lens  
**A20114**



Anti-glare visor  
**A20261**

**ARIZONA 3 (AR-20991-LC)**

NEMA 7 socket  
**A90891**



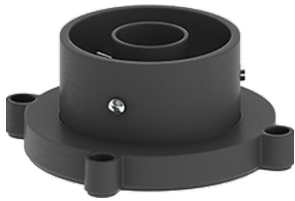
Zhaga Book 18 socket (Up)  
**A90991-U**



DALI Control System  
**Control-DALI**



Smart Pole Accessories  
**Accs-Smart-Pole**



Anti-glare visor  
**A20161**

Please contact the factory for technical details if you wish to use Anti-glare accessories, Colour filters, Lenses and slip glasses in combination.