

ARIZONA 3 (AR-20992-LC)



Product description

Ø225 mm - Supplied with specific 3 m cylindrical, straight aluminium pole: APD130225-AR-20992 - 3 projectors - LIGHTCONNECT™



**LIGHT
CONNECT™**

microVOS™
TECHNOLOGY

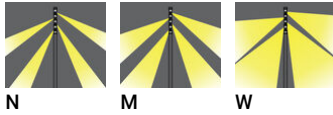
Luminaire Structure

- Die-cast aluminium housing
- Extruded aluminium column
- Pre-treated before powder coating ensuring high corrosion resistance
- Single cable entry
- One IP68 connector supplied with 0.2 m of 3x1.0 sqmm outdoor cable

- Stainless steel fasteners in grade 304 with zinc flake coating (ZFC)
- Durable silicone rubber gasket
- High-efficiency PMMA lens
- Clear acrylic PMMA diffuser
- Integral control gear

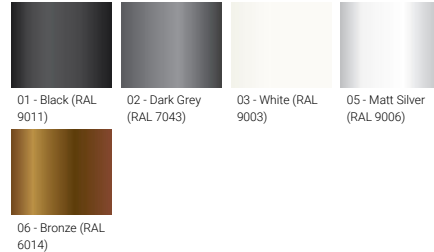
- Maximum wind load resistance is 140 km/h
- Surge protection 10kV
- For ARIZONA 8, the luminaire and the lighting pole with illuminated decorative graphic are controlled separately. Upon request, they can be controlled together by the same protocol, either DMX or DALI.

Optic



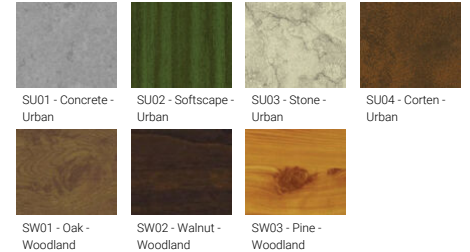
N M W

Product colour



01 - Black (RAL 9011) 02 - Dark Grey (RAL 7043) 03 - White (RAL 9003) 05 - Matt Silver (RAL 9006)
06 - Bronze (RAL 6014)

Special finishes upon request

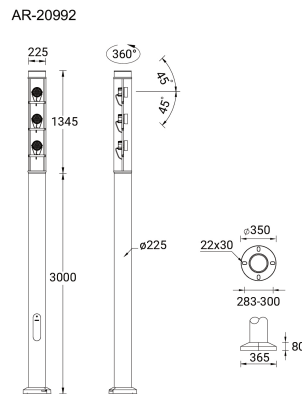


SU01 - Concrete - Urban SU02 - Softscape - Urban SU03 - Stone - Urban SU04 - Corten - Urban
SW01 - Oak - Woodland SW02 - Walnut - Woodland SW03 - Pine - Woodland

ARIZONA 3 (AR-20992-LC)

Technical information

Material	Aluminium	Optic value	15°, 24°, 40°	Operating temperature	-20 °C to 40 °C
Light source	3 x 18 LED	CCT / CRI	3000K CRI80, 4000K CRI80	Cable	One IP68 connector supplied with 0.2 m of 3x1.0 sqmm outdoor cable
Power	84 W	Bug	B2-U1-G0, B2-U1-G1	Through wiring	Single cable entry
Lumen	7806 - 9243 lm	ULR	0%	Lens / Reflector / Optic	High-efficiency PMMA lens, Clear acrylic PMMA diffuser
Efficacy	93 - 110 lm/W	ULOR	0%	MacAdam Ellipse	3 SDCM
Driver option	Integral control gear	CIE flux code n°3	98, 99	Lifetime L90B10 (hours)	> 120,000
Driver	Constant current (CC)	Dimming type	DALI	Lifetime L80B10 (hours)	> 120,000
Input voltage	220-240 V 50/60 Hz	Product colours	Black, Dark Grey, White, Matt Silver, Bronze, Concrete - Urban, Softscape - Urban, Stone - Urban, Corten - Urban, Oak - Woodland, Walnut - Woodland, Pine - Woodland	Lifetime L80B50 (hours)	> 120,000
Optic	N, M, W			Weight	41.3 kg



Accessories



ARIZONA 3 (AR-20992-LC)

3 m - Cylindrical, straight
aluminium pole for ARIZONA
APD130225-AR-20992



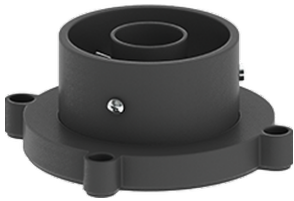
DALI Control System
Control-DALI



Smart Pole Accessories
Accs-Smart-Pole



Linear spread lens
A20214



Anti-glare visor
A20261

Please contact the factory for technical details if you wish to use Anti-glare accessories, Colour filters, Lenses and slip glasses in combination.