

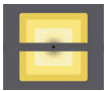
AUGUSTA 9 (AUG-10051)**Product description**

200x80 mm - 1120 mm - 35.5 hours of operation time
(2 Step dimming with motion sensor override) - 5.5 days of autonomy

**Luminaire Structure**

- Clear toughened glass

- Integral control gear

Optic

G

Product colour

01 - Black (RAL 9011)

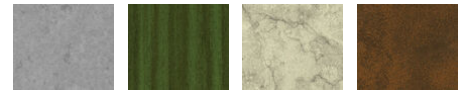
02 - Dark Grey (RAL 7043)

03 - White (RAL 9003)

05 - Matt Silver (RAL 9006)



06 - Bronze (RAL 6014)

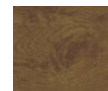
Special finishes upon request

SU01 - Concrete - Urban

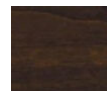
SU02 - Softscape - Urban

SU03 - Stone - Urban

SU04 - Corten - Urban



SW01 - Oak - Woodland



SW02 - Walnut - Woodland



SW03 - Pine - Woodland

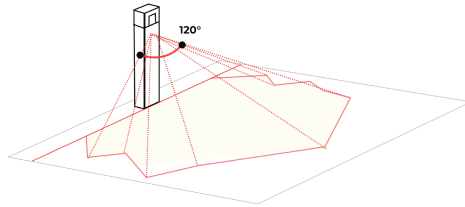
AUGUSTA 9 (AUG-10051)

Technical information

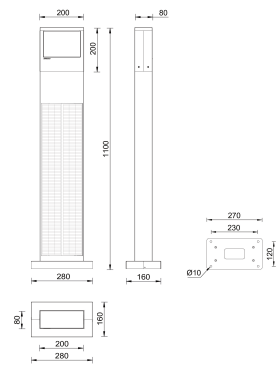
Material	Aluminium	Optic	G	Lens / Reflector / Optic	Clear toughened glass
Light source	40 LED	Optic value	75°x105°	MacAdam Ellipse	3 SDCM
Power	2 W	CCT / CRI	3000K CRI80, 4000K CRI80	Lifetime L90B10 (hours)	> 23,000
Lumen	114 - 120 lm	Dimming type	Dusk to Dawn, 2 Step dimming with motion sensor override, Solar Custom	Lifetime L80B10 (hours)	> 45,000
Efficacy	57 - 60 lm/W			Lifetime L80B50 (hours)	> 49,000
Driver option	Integral control gear	Product colours	Black, Dark Grey, White, Matt Silver, Bronze, Concrete - Urban, Softscape - Urban, Stone - Urban, Corten - Urban, Oak - Woodland, Walnut - Woodland, Pine - Woodland		
Driver	Constant current (CC)				
		Weight	15 kg		
		Operating temperature	-20 °C to 40 °C		

AUGUSTA

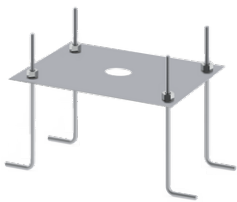
Adjustable sensor (10 - 150 seconds)
120° sensitivity
Sensor detection area: 6 - 9 m



AUG-10051



Accessories



Anchor bolt
A13791



Remote solar charge controller
for Solar Integrated Post Top
luminaire
A92291