

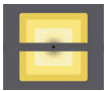
AUGUSTA 9 (AUG-10052)**Product description**

200x80 mm - 1120 mm - 17.5 hours of operation time
(2 Step dimming with motion sensor override) - 5 days
of autonomy

**Luminaire Structure**

- Clear toughened glass

- Integral control gear

Optic

G

Product colour

01 - Black (RAL
9011)

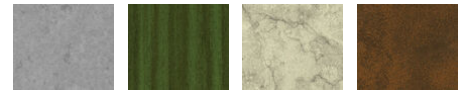
02 - Dark Grey
(RAL 7043)

03 - White (RAL
9003)

05 - Matt Silver
(RAL 9006)



06 - Bronze (RAL
6014)

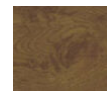
Special finishes upon request

SU01 - Concrete -
Urban

SU02 - Softscape -
Urban

SU03 - Stone -
Urban

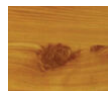
SU04 - Corten -
Urban



SW01 - Oak -
Woodland



SW02 - Walnut -
Woodland



SW03 - Pine -
Woodland

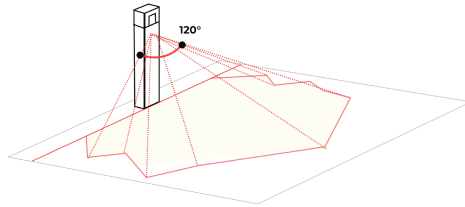
AUGUSTA 9 (AUG-10052)

Technical information

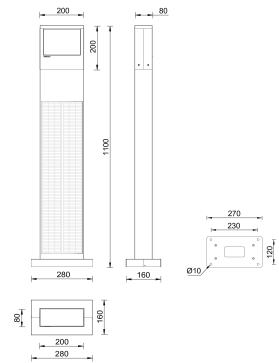
Material	Aluminium	Optic	G	Lens / Reflector / Optic	Clear toughened glass
Light source	40 LED	Optic value	75°x105°	MacAdam Ellipse	3 SDCM
Power	4 W	CCT / CRI	3000K CRI80, 4000K CRI80	Lifetime L90B10 (hours)	> 23,000
Lumen	228 - 240 lm	Dimming type	Dusk to Dawn, 2 Step dimming with motion sensor override, Solar Custom	Lifetime L80B10 (hours)	> 45,000
Efficacy	57 - 60 lm/W			Lifetime L80B50 (hours)	> 49,000
Driver option	Integral control gear	Product colours	Black, Dark Grey, White, Matt Silver, Bronze, Concrete - Urban, Softscape - Urban, Stone - Urban, Corten - Urban, Oak - Woodland, Walnut - Woodland, Pine - Woodland		
Driver	Constant current (CC)				
		Weight	15 kg		
		Operating temperature	-20 °C to 40 °C		

AUGUSTA

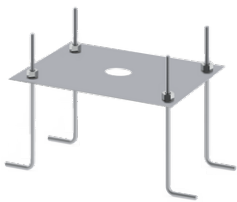
Adjustable sensor (10 - 150 seconds)
120° sensitivity
Sensor detection area: 6 - 9 m



AUG-10052



Accessories



Anchor bolt
A13791



Remote solar charge controller
for Solar Integrated Post Top
luminaire
A92291