

**AUGUSTA 10 (AUG-10061)**



**Product description**

200x80 mm - 1120 mm - 35.5 hours of operation time (2 Step dimming with motion sensor override) - 5.5 days of autonomy



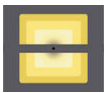
**Luminaire Structure**

- Die-cast aluminium housing
- Extruded aluminium column
- Pre-treated before powder coating ensuring high corrosion resistance
- Stainless steel fasteners in grade 304 with zinc flake coating (ZFC)
- Durable silicone rubber gasket
- Clear toughened glass
- Integral control gear
- Solar panel mono-crystalline silicon high-efficiency 4x10W

- Lithium Iron Phosphate (LiFePO4 ) battery 16.5Ah 12 VDC
- Solar charger controller system 12V 10A
- Luminaires operation time depends on the weather conditions
- Full automatic electronic protection function against short circuit, overcurrent, overload, overvoltage and high temperature
- Standard: Off-grid, 100% solar, not connected to the utility grid. Utility grid connection is available upon request
- Without any sun (Autonomy), the battery would last for a maximum 5 days
- Motion sensor integrated
- Different dimming options are available

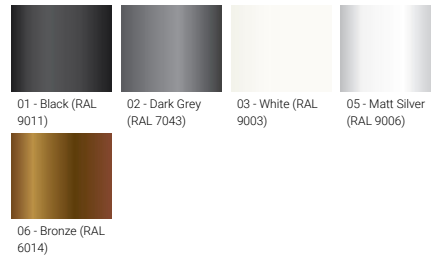
- STD: 2 Step dimming with motion sensor override (3 hours: 60% without movement, 100% for 1 minute when the motion sensor activated. After 3 hours: 30% without movement, 60% for 1 minute when the motion sensor activated)
- ND: Dusk to Dawn, CT: Custom examples are 5 Step dimming, Custom hours, Custom dimming levels (Step length and minimum dim level is 10%)
- Maximum 35.5 hours of operation time (2 Step dimming with motion sensor override)
- Remote solar charge controller can be ordered as an accessory
- Autonomy and Operation time calculations are done with the following information: Peak Sun-Hour (PSH) is 3 hours. Hours of operation are 12 hours per day. Detection of movement is 5 times per hour.
- Autonomy and Operation time calculations are only indicative and will depend on several variable factors. Please contact the factory to determine the specific calculations for your project.

**Optic**

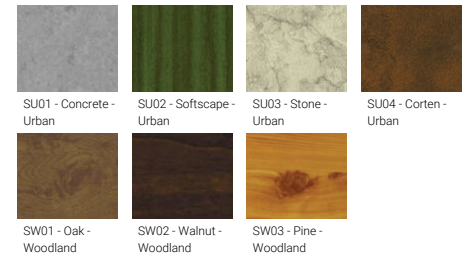


G

**Product colour**



**Special finishes upon request**



**AUGUSTA 10 (AUG-10061)**

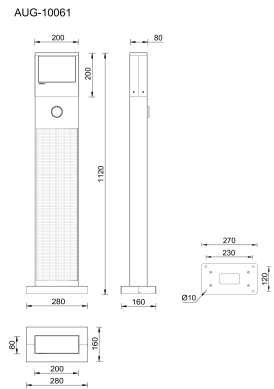
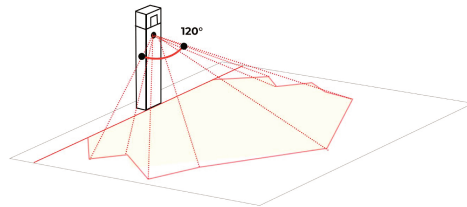
**Technical information**

<b>Material</b>	Aluminium
<b>Light source</b>	40 LED
<b>Power</b>	2 W
<b>Lumen</b>	114 - 120 lm
<b>Efficacy</b>	57 - 60 lm/W
<b>Driver option</b>	Integral control gear
<b>Driver</b>	Constant current (CC)

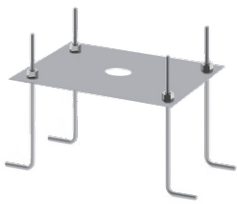
<b>Input voltage</b>	Solar
<b>Optic</b>	G
<b>Optic value</b>	75°x105°
<b>CCT / CRI</b>	3000K CRI80, 4000K CRI80
<b>Dimming type</b>	Dusk to Dawn, 2 Step dimming with motion sensor override, Solar Custom
<b>Product colours</b>	Black, Dark Grey, White, Matt Silver, Bronze, Concrete - Urban, Softscape - Urban, Stone - Urban, Corten - Urban, Oak - Woodland, Walnut - Woodland, Pine - Woodland
<b>Weight</b>	15 kg

<b>Operating temperature</b>	-20 °C to 40 °C
<b>Lens / Reflector / Optic</b>	Clear toughened glass
<b>MacAdam Ellipse</b>	3 SDCM
<b>Lifetime L90B10 (hours)</b>	> 23,000
<b>Lifetime L80B10 (hours)</b>	> 45,000
<b>Lifetime L80B50 (hours)</b>	> 49,000

**AUGUSTA**  
Adjustable sensor ( 10 - 150 seconds )  
120° sensitivity  
Sensor detection area: 6 - 9 m



**Accessories**



Anchor bolt  
**A13791**



Remote solar charge controller for Solar Integrated Bollards and Vertical Solar PV poles  
**A92691**