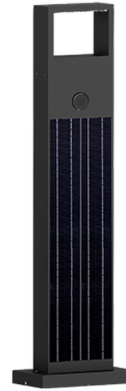


AUGUSTA 10 (AUG-10062)



Product description

200x80 mm - 1120 mm - 17.5 hours of operation time (2 Step dimming with motion sensor override) - 3 days of autonomy



microPrim™

SOLAR POWERED

MOTION SENSOR

Luminaire Structure

- Die-cast aluminium housing
- Extruded aluminium column
- Pre-treated before powder coating ensuring high corrosion resistance
- Stainless steel fasteners in grade 304 with zinc flake coating (ZFC)
- Durable silicone rubber gasket
- Toughened glass
- Integral control gear
- Solar panel mono-crystalline silicon high-efficiency 4x10W

- Lithium Iron Phosphate (LiFePO4) battery 18Ah 12 VDC
- Solar charger controller system 12V 10A
- Luminaires operation time depends on the weather conditions
- Full automatic electronic protection function against short circuit, overcurrent, overload, overvoltage and high temperature
- Standard: Off-grid, 100% solar, not connected to the utility grid. Utility grid connection is available upon request
- Without any sun (Autonomy), the battery would last for a maximum 5 days
- * Motion sensor integrated
- Different dimming options are available

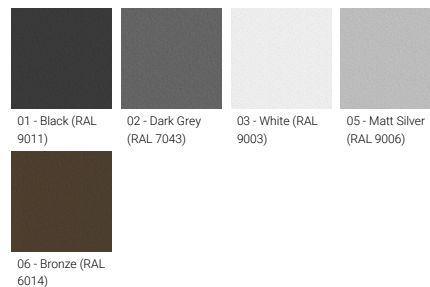
- STD: 2 Step dimming with motion sensor override (3 hours: 60% without movement, 100% for 1 minute when the motion sensor activated. After 3 hours: 30% without movement, 60% for 1 minute when the motion sensor activated)
- ND: Dusk to Dawn, CT: Custom examples are 5 Step dimming, Custom hours, Custom dimming levels (Step length and minimum dim level is 10%)
- Maximum 27 hours of operation time (Dimming with motion sensor override)
- Autonomy and Operation time calculations are done with the following information: Peak Sun-Hour (PSH) is 3 hours. Hours of operation are 12 hours per day. Detection of movement is 10 times per hour.
- Remote solar charge controller can be ordered as an accessory
- Autonomy and Operation time calculations are only indicative and will depend on several variable factors. Please contact the factory to determine the specific calculations for your project.

Optic

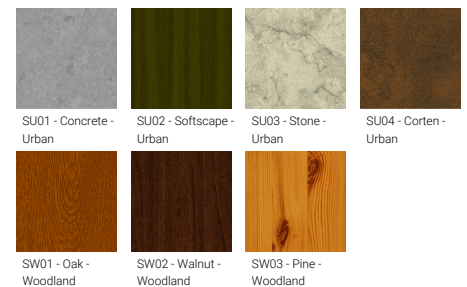


G

Product colour



Special finishes upon request



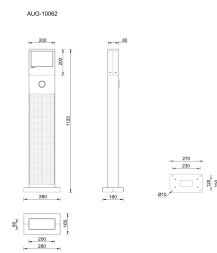
AUGUSTA 10 (AUG-10062)

Technical information

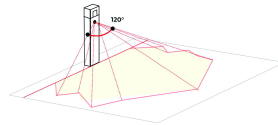
Material	Aluminium
Light source	40 LED
Power	4 W
Lumen	228 - 240 lm
Efficacy	57 - 60 lm/W
Driver option	Integral control gear
Driver	Constant current (CC)

Input voltage	Solar
Optic	G
Optic value	75°x105°
CCT / CRI	3000K CRI80, 4000K CRI80
Dimming type	Dusk to Dawn, 2 Step dimming with motion sensor override, Solar Custom
Product colours	Black, Dark Grey, White, Matt Silver, Bronze, Concrete - Urban, Softscape - Urban, Stone - Urban, Corten - Urban, Oak - Woodland, Walnut - Woodland, Pine - Woodland
Weight	15.0 kg

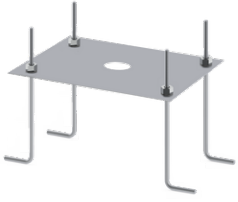
Operating temperature	-20 °C to 40 °C
Lens / Reflector / Optic	Toughened glass
MacAdam Ellipse	3 SDCM
Lifetime L90B10 (hours)	> 23,000
Lifetime L80B10 (hours)	> 45,000
Lifetime L80B50 (hours)	> 49,000



AUGUSTA
Adjustable sensor (10 - 150 seconds)
120° sensorivity
Sensor detection area 6 - 9 m



AUGUSTA 10 (AUG-10062)**Accessory**



Anchor bolt
A13791



Remote solar charge controller
for Solar Integrated Bollards and
Vertical Solar PV poles
A92691



Auto dimming feature
auto-dim
