

AURORA (AUR-30012) (Version 2)



Product description

Without remote driver - Constant voltage (CV) 24 V - RGBW - 360° light beam



Luminaire Structure

- Die-cast aluminium housing
- Pre-treated before powder coating ensuring high corrosion resistance
- Single cable entry
- Stainless steel fasteners in grade 304 with zinc flake coating (ZFC)

- Durable silicone rubber gasket
- High-efficiency PMMA lens
- Remote driver (not included)
- 360° light blade effect

- For AUR-30011 not included 24 VDC input, DMXRDM address with stable signal

Optic



G

Product colour

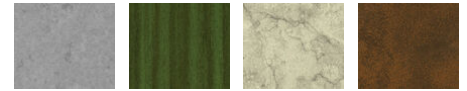


01 - Black (RAL 9011) 02 - Dark Grey (RAL 7043) 03 - White (RAL 9003) 05 - Matt Silver (RAL 9006)

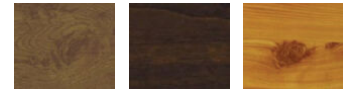


06 - Bronze (RAL 6014)

Special finishes upon request



SU01 - Concrete - Urban SU02 - Softscape - Urban SU03 - Stone - Urban SU04 - Corten - Urban



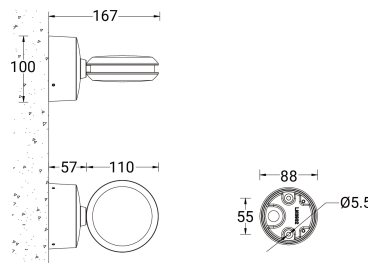
SW01 - Oak - Woodland SW02 - Walnut - Woodland SW03 - Pine - Woodland

AURORA (AUR-30012) (Version 2)

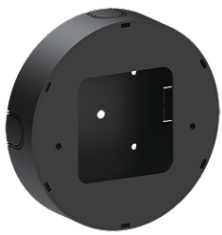
Technical information

Material	Aluminium	Input voltage	24 VDC	CIE flux code n°3	83
Light source	12 LED	Optic	G	Dimming type	DMX, DMX/RDM
Power	12 W	Optic value	3°x180°	Product colours	Black, Dark Grey, White, Matt Silver, Bronze, Concrete - Urban, Softscape - Urban, Stone - Urban, Corten - Urban, Oak - Woodland, Walnut - Woodland, Pine - Woodland
Lumen	102 - 105 lm	CCT / CRI	RGBW30, RGBW40		
Efficacy	9 lm/W	Bug	B0-U2-G0		
Driver option	Remote driver (not included)	ULR	32%	Weight	0.7 kg
Driver	Constant voltage (CV)	ULOR	32%	Operating temperature	-20 °C to 50 °C
				Through wiring	Single cable entry
				Lens / Reflector / Optic	High-efficiency PMMA lens

AUR-30012



Accessories



Surface mounting box for easy cabling (AURORA)
SCE-AURORA



DMX Control System
Control-DMX



DMX/RDM Control System
Control-DMX-RDM



Driver (CV) - On/Off - 36 W - IP67
- 24 V
A34491-ND

AURORA (AUR-30012) (Version 2)

Driver (CV) - On/Off - 60 W - IP67
- 24 V

A34591-ND



Driver (CV) - On/Off - 100 W -
IP67 - 24 V

A34791-ND



Driver (CV) - On/Off - 150 W -
IP67 - 24 V

A34891-ND



Driver (CV) - On/Off - 200 W -
IP67 - 24 V

A34991-ND



Driver (CV) - On/Off - 350 W -
IP67 - 24 V

A35091-ND
