

BERLIN 2 (BEB-80011)**Product description**

Small

**Luminaire Structure**

- Aluminium reflector

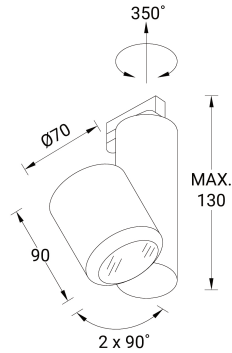
- Integral control gear

BERLIN 2 (BEB-80011)

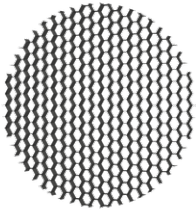
Technical information

Material	Aluminium	Driver option	Integral control gear	Weight	1.1 kg
Light source	1 COB	Driver	Constant current (CC)	Operating temperature	-20 °C to 40 °C
Power	15 W	Input voltage	220-240 V 50/60 Hz	Lens / Reflector / Optic	Aluminium reflector

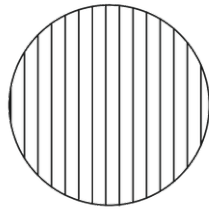
BERLIN 2
BEB-80011



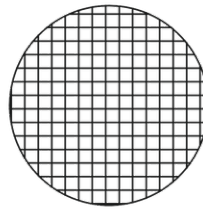
Accessories



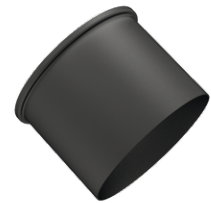
Honeycomb louvre
A80014



Linear spread lens
A80012



Prismatic diffusion lens
A80013



Snoot (Black)
A80011