

BILLUND 1 (BIU-90002-LC)**Product description**

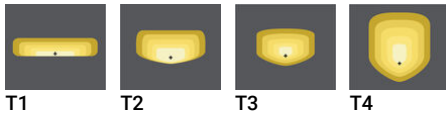
Small - LIGHTCONNECT™

**Luminaire Structure**

- Single cable entry
- One IP68 connector supplied with 0.3 m of 3x1.0 sqmm outdoor cable

- Clear toughened glass
- High-efficiency polycarbonate lens

- Integral control gear

Optic

T1

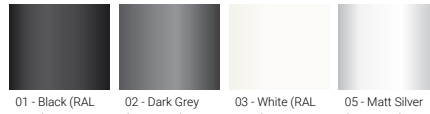
T2

T3

T4



T5

Product colour

01 - Black (RAL 9011)

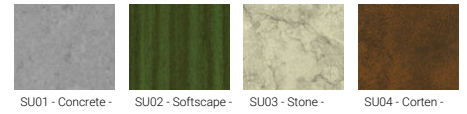
02 - Dark Grey (RAL 7043)

03 - White (RAL 9003)

05 - Matt Silver (RAL 9006)



06 - Bronze (RAL 6014)

Special finishes upon request

SU01 - Concrete - Urban

SU02 - Softscape - Urban

SU03 - Stone - Urban

SU04 - Corten - Urban



SW01 - Oak - Woodland



SW02 - Walnut - Woodland



SW03 - Pine - Woodland

BILLUND 1 (BIU-90002-LC)

Technical information

Material	Aluminium	Optic	T1, T2, T3, T4, T5	Product colours	Black, Dark Grey, White, Matt Silver, Bronze, Concrete - Urban, Softscape - Urban, Stone - Urban, Corten - Urban, Oak - Woodland, Walnut - Woodland, Pine - Woodland
Light source	36 LED	Optic value	148°x99°, 141°x124°, 150°x75°, 137°x71°, 102°x63°, 92°x121°	Weight	4.5 kg
Power	40 W	CCT / CRI	3000K CRI70, 4000K CRI70	Operating temperature	-20 °C to 40 °C
Lumen	4735 - 5926 lm	Bug	B1-U0-G1, B2-U0-G0, B2-U0-G1, B2-U0-G2	Cable	One IP68 connector supplied with 0.3 m of 3x1.0 sqmm outdoor cable
Efficacy	118 - 148 lm/W	ULR	0%	Through wiring	Single cable entry
Driver option	Integral control gear	ULOR	0%	Lens / Reflector / Optic	Clear toughened glass, High-efficiency polycarbonate lens
Driver	Constant current (CC)	CIE flux code n°3	100, 95, 96, 97, 98	Variants (DALI)	Compatible with EN/ IEC 60598-2-22: Suitable for emergency installations as central supply, non-maintained (Z0)
Input voltage	220-240 V 50/60 Hz	Dimming type	DALI		

Accessories



NEMA 7 socket
A90891



Zhaga Book 18 socket (Up)
A90991-U