

BILLUND 2 (BIU-90015-LC)**Product description**

Medium - LIGHTCONNECT™

**Luminaire Structure**

- Single cable entry
- One IP68 connector supplied with 0.3 m of 3x1.0 sqmm outdoor cable

- Clear toughened glass
- High-efficiency polycarbonate lens

- Integral control gear

Optic

T1

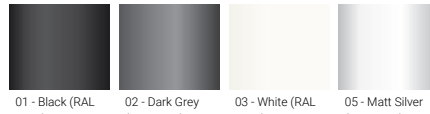
T2

T3

T4



T5

Product colour

01 - Black (RAL 9011)

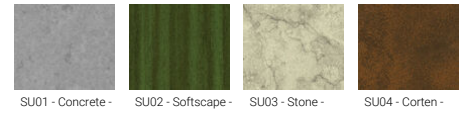
02 - Dark Grey (RAL 7043)

03 - White (RAL 9003)

05 - Matt Silver (RAL 9006)



06 - Bronze (RAL 6014)

Special finishes upon request

SU01 - Concrete - Urban

SU02 - Softscape - Urban

SU03 - Stone - Urban

SU04 - Corten - Urban



SW01 - Oak - Woodland



SW02 - Walnut - Woodland



SW03 - Pine - Woodland

BILLUND 2 (BIU-90015-LC)

Technical information

Material	Aluminium	Optic value	146°x100°, 138°x125°, 140°x63°, 133°x66°, 111°x65°, 92°x121°	Operating temperature	-20 °C to 40 °C
Light source	96 LED	CCT / CRI	3000K CRI70, 4000K CRI70	Cable	One IP68 connector supplied with 0.3 m of 3x1.0 sqmm outdoor cable
Power	195 W	Bug	B3-U0-G3, B4-U0-G3, B4-U0-G4, B5-U0-G1, B5-U0-G2	Through wiring	Single cable entry
Lumen	23264 - 29547 lm	ULR	0%	Lens / Reflector / Optic	Clear toughened glass, High-efficiency polycarbonate lens
Efficacy	119 - 152 lm/W	ULOR	0%	MacAdam Ellipse	5 SDCM
Driver option	Integral control gear	CIE flux code n°3	100, 95, 96, 97, 98	Lifetime L90B10 (hours)	> 36,000
Driver	Constant current (CC)	Dimming type	DALI	Lifetime L80B10 (hours)	> 74,000
Input voltage	220-240 V 50/60 Hz		Black, Dark Grey, White, Matt Silver, Bronze, Concrete - Urban, Softscape - Urban, Stone - Urban, Corten - Urban, Oak - Woodland, Walnut - Woodland, Pine - Woodland	Lifetime L80B50 (hours)	> 81,000
Optic	T1, T2, T3, T4, T5	Product colours			
		Weight	10.5 kg		

Accessories



NEMA 7 socket
A90891



Zhaga Book 18 socket (Up)
A90991-U