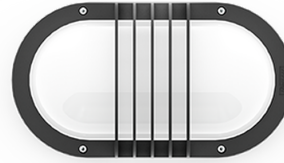


CAPSULE 1 (CA-30305-1MS)



Product description

With integrated motion sensor



Luminaire Structure

- Die-cast aluminium housing and frame
- Pre-treated before powder coating ensuring high corrosion resistance
- Two cable entries for through wiring
- Stainless steel fasteners in grade 304 with zinc flake coating (ZFC)
- Durable silicone rubber gasket
- Opal UV-stabilised polycarbonate diffuser
- Integral control gear

Optic



G

Product colour

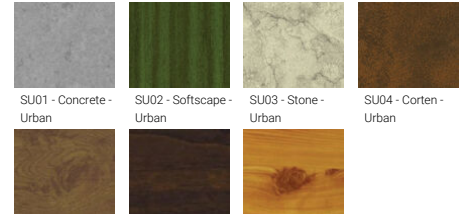


01 - Black (RAL 9011) 02 - Dark Grey (RAL 7043) 03 - White (RAL 9003) 05 - Matt Silver (RAL 9006)



06 - Bronze (RAL 6014)

Special finishes upon request



SU01 - Concrete - Urban SU02 - Softscape - Urban SU03 - Stone - Urban SU04 - Corten - Urban
 SW01 - Oak - Woodland SW02 - Walnut - Woodland SW03 - Pine - Woodland

CAPSULE 1 (CA-30305-1MS)

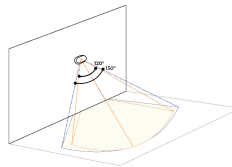
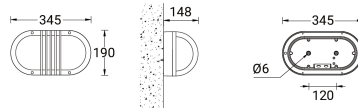
Technical information

Material	Aluminium
Light source	96 LED
Power	15 W
Lumen	1247 - 1313 lm
Efficacy	83 - 88 lm/W
Driver option	Integral control gear
Driver	Constant current (CC)
Input voltage	220-240 V 50/60 Hz
Optic	G

Optic value	88°x151°
CCT / CRI	3000K CRI80, 4000K CRI80
Bug	B0-U2-G1
ULR	14%
ULOR	14%
CIE flux code n°3	86
Dimming type	On/Off, 1-10V
Product colours	Black, Dark Grey, White, Matt Silver, Bronze, Concrete - Urban, Softscape - Urban, Stone - Urban, Corten - Urban, Oak - Woodland, Walnut - Woodland, Pine - Woodland
Weight	2.2 kg

Operating temperature	-20 °C to 50 °C
Through wiring	Two cable entries for through wiring
Lens / Reflector / Optic	Opal UV-stabilised polycarbonate diffuser
MacAdam Ellipse	3 SDCM
Lifetime L90B10 (hours)	> 37,000
Lifetime L80B10 (hours)	> 78,000
Lifetime L80B50 (hours)	> 86,000
Variants (On/Off, 1-10V)	Compatible with EN/ IEC 60598-2-22: Suitable for emergency installations as central supply, non-maintained (Z0)

CA-30305-1MS



CAPSULE

Model sensor - Microsensor - 1-10V
Adjustable sensor (3 seconds - 10 minutes)
100° beam angle
Single aperture lens
CA-30305-1MS (2) (1-4 m)
CA-30305-1MS (3) (1-7 m)
CA-30305-1MS (4) (1-8 m)
CA-30305-1MS (5) (1-4 - 5 m)
Model sensor - Microsensor - On/Off
Adjustable sensor (3 seconds - 30 minutes)
100° beam angle
Single aperture lens
CA-30305-1MS (2) (1-4 m)
CA-30305-1MS (3) (1-7 m)
CA-30305-1MS (4) (1-8 m)
CA-30305-1MS (5) (1-3 - 2 m)

Accessories



DALI Control System
Control-DALI



Remote controller for the motion sensor - 1-10V (A34191)
A34391