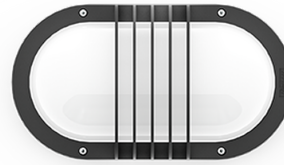


**CAPSULE 1 (CA-30306)**



**Product description**

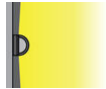
TW



**Luminaire Structure**

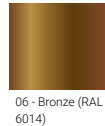
- Die-cast aluminium housing and frame
- Pre-treated before powder coating ensuring high corrosion resistance
- Two cable entries for through wiring
- Stainless steel fasteners in grade 304 with zinc flake coating (ZFC)
- Durable silicone rubber gasket
- Opal UV-stabilised polycarbonate diffuser
- Integral control gear

**Optic**

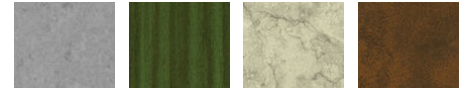


G

**Product colour**



**Special finishes upon request**



**CAPSULE 1 (CA-30306)**

**Technical information**

<b>Material</b>	Aluminium	<b>Optic value</b>	163°x99°	<b>Operating temperature</b>	-20 °C to 50 °C
<b>Light source</b>	192 LED	<b>CCT / CRI</b>	TW (2700K - 6500K)	<b>Through wiring</b>	Two cable entries for through wiring
<b>Power</b>	16 W	<b>Bug</b>	B1-U3-G1	<b>Lens / Reflector / Optic</b>	Opal UV-stabilised polycarbonate diffuser
<b>Lumen</b>	1188 lm	<b>ULR</b>	15.05%	<b>MacAdam Ellipse</b>	3 SDCM
<b>Efficacy</b>	74 lm/W	<b>ULOR</b>	15.05%	<b>Lifetime L90B10 (hours)</b>	> 37,000
<b>Driver option</b>	Integral control gear	<b>CIE flux code n°3</b>	85	<b>Lifetime L80B10 (hours)</b>	> 78,000
<b>Driver</b>	Constant current (CC)	<b>Dimming type</b>	DALI	<b>Lifetime L80B50 (hours)</b>	> 86,000
<b>Input voltage</b>	220-240 V 50/60 Hz	<b>Product colours</b>	Black, Dark Grey, White, Matt Silver, Bronze, Concrete - Urban, Softscape - Urban, Stone - Urban, Corten - Urban, Oak - Woodland, Walnut - Woodland, Pine - Woodland	<b>Variants (DALI)</b>	Compatible with EN/ IEC 60598-2-22: Suitable for emergency installations as central supply, non-maintained (Z0)
<b>Optic</b>	G		<b>Weight</b>	2.2 kg	

**CA-30306**

