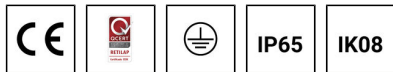


FORREY 8 (FOR-10142)



Product description

Ø186 - 874 mm - With louver & opal diffuser



Luminaire Structure

- Die-cast aluminium housing and frame
- Extruded aluminium column
- Pre-treated before powder coating ensuring high corrosion resistance
- Models with shade will have colour white coating at inside of shade luminaire and outside surface coating according to colour of luminaire

- Single cable entry
- One IP68 connector supplied with 0.2 m of 3x1.0 sqmm outdoor cable
- Stainless steel fasteners in grade 304 with zinc flake coating (ZFC)
- Durable silicone rubber gasket

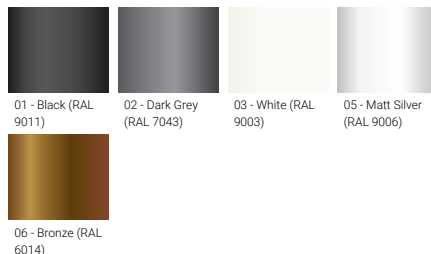
- Opal UV-stabilised polycarbonate diffuser
- Integral control gear
- FORREY luminaires with opal lens and colder than 3000K CCT do not meet the IDA certification requirements

Optic

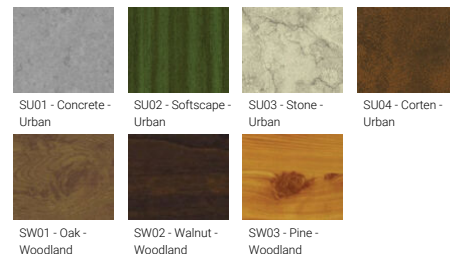


G

Product colour



Special finishes upon request

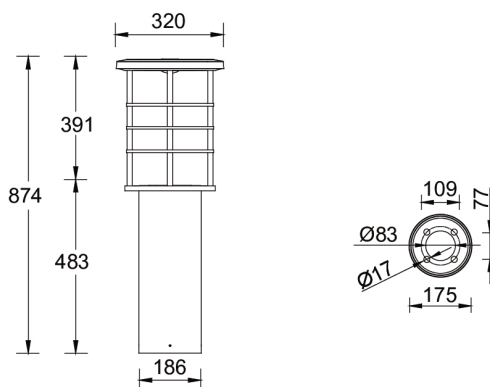


FORREY 8 (FOR-10142)

Technical information

Material	Aluminium	Optic	G	Through wiring	Single cable entry
Light source	160 LED	Optic value	360°	Lens / Reflector / Optic	Opal UV-stabilised polycarbonate diffuser
Power	50.2 W	CCT / CRI	3000K CRI80, 4000K CRI80	MacAdam Ellipse	3 SDCM
Lumen	3279 - 3526 lm	Dimming type	On/Off, 1-10V, DALI	Lifetime L90B10 (hours)	> 23,000
Efficacy	65 - 70 lm/W	Product colours	Black, Dark Grey, White, Matt Silver, Bronze, Concrete - Urban, Softscape - Urban, Stone - Urban, Corten - Urban, Oak - Woodland, Walnut - Woodland, Pine - Woodland	Lifetime L80B10 (hours)	> 45,000
Driver option	Integral control gear			Lifetime L80B50 (hours)	> 49,000
Driver	Constant current (CC)			Variants (DALI)	Compatible with EN/ IEC 60598-2-22: Suitable for emergency installations as central supply, non-maintained (Z0)
Input voltage	220-240 V 50/60 Hz	Weight	13.0 kg		
		Operating temperature	-20 °C to 40 °C		
		Cable	One IP68 connector supplied with 0.2 m of 3x1.0 sqmm outdoor cable		

FOR-10142



Accessories

