

GAVLE 3 (GAV-80123)



Product description

Down - 60x90 mm - 1500 mm - RGBW



Luminaire Structure

- Extruded aluminium bended ring profile with powder coating
- Stainless steel fasteners in grade 316
- Steel brackets for ceiling down mounting option

- Opal PMMA diffuser (UGR <19) for glare control
- Up and down light distribution options
- Passive thermal management

- Integral control gear
- Remote driver is included for dimming type: 1-10V (-DI) for GAV-80101, GAV-80111, GAV-80121, GAV-80131, GAV-80141, GAV-80151, GAV-80161, GAV-80171, GAV-80201, GAV-80211, GAV-80221, GAV-80231, GAV-80241, GAV-80251, GAV-80261, GAV-80271
- Wireless control available through Bluetooth connection

Optic



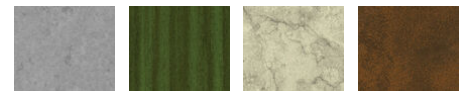
0

Product colour

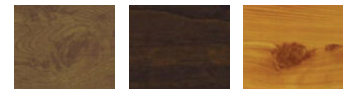


01 - Black (RAL 9011) 03 - White (RAL 9003) 05 - Matt Silver (RAL 9006)

Special finishes upon request



SU01 - Concrete - Urban SU02 - Softscape - Urban SU03 - Stone - Urban SU04 - Corten - Urban



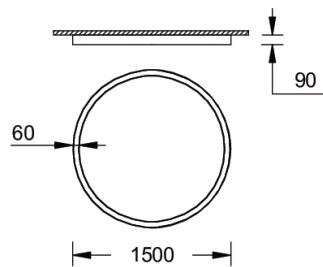
SW01 - Oak - Woodland SW02 - Walnut - Woodland SW03 - Pine - Woodland

GAVLE 3 (GAV-80123)

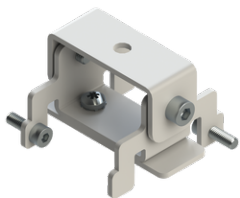
Technical information

| | | | | | |
|----------------------|-----------------------|----------------------|-----------------------|------------------------------|---|
| Material | Aluminium | Driver | Constant current (CC) | Product colours | Black, White, Matt Silver, Concrete - Urban, Softscape - Urban, Stone - Urban, Corten - Urban, Oak - Woodland, Walnut - Woodland, Pine - Woodland |
| Light source | 1536 LED | Input voltage | 220-240 V 50/60 Hz | Weight | 11.3 kg |
| Power | 86 W | Optic | 0 | Operating temperature | -20 °C to 40 °C |
| Lumen | 2681 lm | Optic value | 102° | Variants (Bluetooth) | Compatible with EN/ IEC 60598-2-22: Suitable for emergency installations as central supply, non-maintained (Z0) |
| Efficacy | 31 lm/W | CCT / CRI | RGBW30, RGBW40 | | |
| Driver option | Integral control gear | Dimming type | Bluetooth | | |

GAV-80123



Accessories



Ceiling-mounting bracket (40 mm profile)
A81381



Xpress wireless switch
A90591



Recessing box
A61051



DALI Control System
Control-DALI