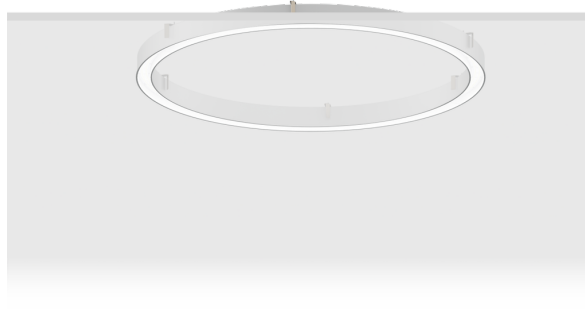


GAVLE 2 (GAV-80322)



Product description

Down - 110x90 mm - 1500 mm - TW



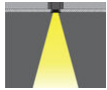
Luminaire Structure

- Extruded aluminium bended profile with powder coating
- Stainless steel fasteners in grade 316
- Stainless steel brackets and screws for mounting
- Opal PMMA diffuser (UGR <19) for glare control

- Up and down light distribution options
- Passive thermal management
- Integral control gear
- Remote driver is included for dimming type: 1-10V (-DI) for GAV-80001, GAV-80011, GAV-80021, GAV-80031, GAV-80041, GAV-80051, GAV-80061, GAV-80071

- Wireless control available through Bluetooth connection
- Daylight and occupancy sensor options

Optic



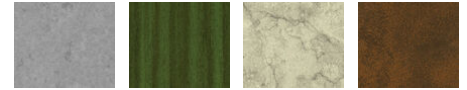
0

Product colour



01 - Black (RAL 9011) 03 - White (RAL 9003) 05 - Matt Silver (RAL 9006)

Special finishes upon request



SU01 - Concrete - Urban SU02 - Softscape - Urban SU03 - Stone - Urban SU04 - Corten - Urban



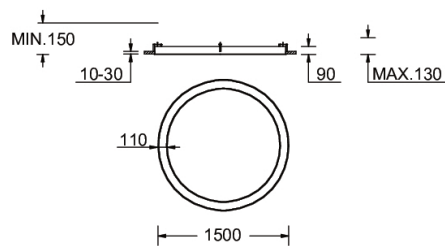
SW01 - Oak - Woodland SW02 - Walnut - Woodland SW03 - Pine - Woodland

GAVLE 2 (GAV-80322)

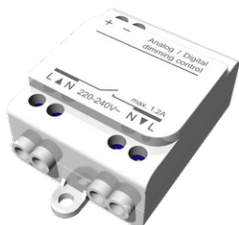
Technical information

| | | | | | |
|----------------------|-----------------------|----------------------|-----------------------|------------------------------|---|
| Material | Aluminium | Driver | Constant current (CC) | Product colours | Black, White, Matt Silver, Concrete - Urban, Softscape - Urban, Stone - Urban, Corten - Urban, Oak - Woodland, Walnut - Woodland, Pine - Woodland |
| Light source | 1920 LED | Input voltage | 220-240 V 50/60 Hz | Weight | 14.9 kg |
| Power | 122 W | Optic | 0 | Operating temperature | -20 °C to 40 °C |
| Lumen | 14907 lm | Optic value | 102° | Variants (DALI) | Compatible with EN/ IEC 60598-2-22: Suitable for emergency installations as central supply, non-maintained (Z0) |
| Efficacy | 122 lm/W | CCT / CRI | TW (2700K - 6500K) | | |
| Driver option | Integral control gear | Dimming type | DALI | | |

GAV-80322



Accessories



Wireless bluetooth converter
A90291



Xpress wireless switch
A90591



DALI Control System
Control-DALI