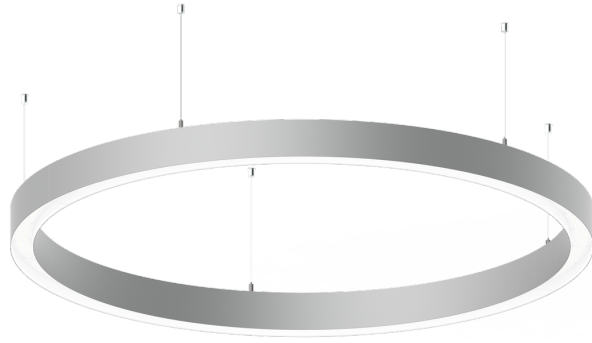


GAVLE 5 (GAV-90003)**Product description**

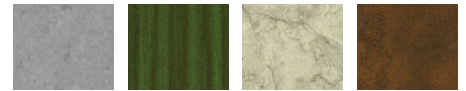
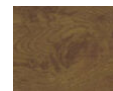
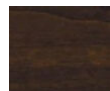
Down - 60x90 mm - 500 mm - RGBW

**Luminaire Structure**

- Remote driver (included)

Optic

0

Product colour01 - Black (RAL
9011)03 - White (RAL
9003)05 - Matt Silver
(RAL 9006)**Special finishes upon request**SU01 - Concrete -
UrbanSU02 - Softscape -
UrbanSU03 - Stone -
UrbanSU04 - Corten -
UrbanSW01 - Oak -
WoodlandSW02 - Walnut -
WoodlandSW03 - Pine -
Woodland

GAVLE 5 (GAV-90003)

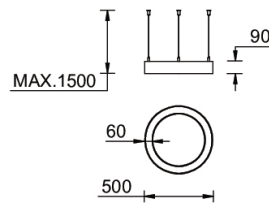
Technical information

Material	Aluminium
Light source	384 LED
Power	27 W
Lumen	859 lm
Efficacy	32 lm/W
Driver option	Remote driver (included)

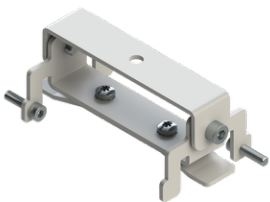
Driver	Constant current (CC)
Input voltage	250 mA,
Optic	0
Optic value	Opal
CCT / CRI	RGBW40
Dimming type	Bluetooth

Product colours	Black, White, Matt Silver, Concrete - Urban, Softscape - Urban, Stone - Urban, Corten - Urban, Oak - Woodland, Walnut - Woodland, Pine - Woodland
Weight	3.7 kg
Operating temperature	-20 °C to 40 °C
Variants (Bluetooth)	Compatible with EN/ IEC 60598-2-22: Suitable for emergency installations as central supply, non-maintained (Z0)

Gavle 500



Accessories



Ceiling-mounting bracket (60 mm profile)
A81481



Xpress wireless switch
A90591



Recessing box
A61051



DALI Control System
Control-DALI