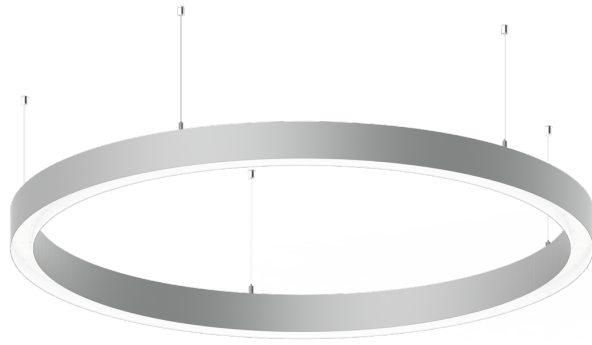


GAVLE 5 (GAV-90103)**Product description**

Down (Optic) & Up (Optic 2nd) - 60x100 mm - 500 mm
- RGBW

**Luminaire Structure**

- Integral control gear

Optic

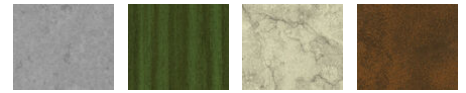
0 / 0

Product colour

01 - Black (RAL 9011)

03 - White (RAL 9003)

05 - Matt Silver (RAL 9006)

Special finishes upon request

SU01 - Concrete - Urban

SU02 - Softscape - Urban

SU03 - Stone - Urban

SU04 - Corten - Urban



SW01 - Oak - Woodland



SW02 - Walnut - Woodland



SW03 - Pine - Woodland

GAVLE 5 (GAV-90103)

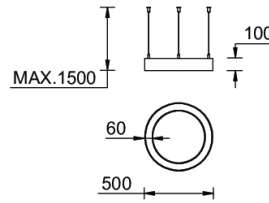
Technical information

Material	Aluminium
Light source	384 & 384 LED
Power	54 W
Lumen	1818 lm
Efficacy	34 lm/W
Driver option	Integral control gear

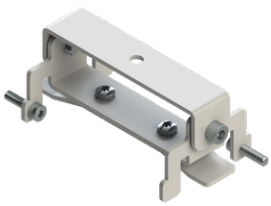
Driver	Constant current (CC)
Input voltage	220-240 V 50/60 Hz
Optic	O
Optic value	Opal
Optic (2nd)	O
Optic (2nd) value	Opal

CCT / CRI	RGBW40
Dimming type	Bluetooth
Product colours	Black, White, Matt Silver, Concrete - Urban, Softscape - Urban, Stone - Urban, Corten - Urban, Oak - Woodland, Walnut - Woodland, Pine - Woodland
Weight	4.2 kg
Operating temperature	-20 °C to 40 °C
Variants (Bluetooth)	Compatible with EN/ IEC 60598-2-22: Suitable for emergency installations as central supply, non-maintained (Z0)

Gavle 500



Accessories



Ceiling-mounting bracket (60 mm profile)
A81481



Xpress wireless switch
A90591



Recessing box
A61051



DALI Control System
Control-DALI