

GAVLE 5 (GAV-90104)**Product description**

Down (Optic) & Up (Optic 2nd) - 60x100 mm - 500 mm
- RGBW DMX

**Luminaire Structure**

- Integral control gear

Optic

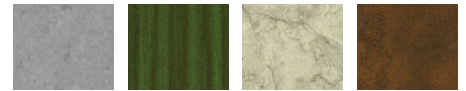
0

Product colour

01 - Black (RAL 9011)

03 - White (RAL 9003)

05 - Matt Silver (RAL 9006)

Special finishes upon request

SU01 - Concrete - Urban

SU02 - Softscape - Urban

SU03 - Stone - Urban

SU04 - Corten - Urban



SW01 - Oak - Woodland



SW02 - Walnut - Woodland



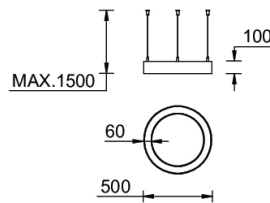
SW03 - Pine - Woodland

GAVLE 5 (GAV-90104)

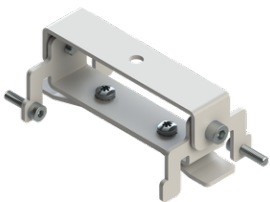
Technical information

Material	Aluminium	Driver	Constant current (CC)	Product colours	Black, White, Matt Silver, Concrete - Urban, Softscape - Urban, Stone - Urban, Corten - Urban, Oak - Woodland, Walnut - Woodland, Pine - Woodland
Light source	384 & 384 LED	Input voltage	220-240 V 50/60 Hz	Weight	4.2 kg
Power	54 W	Optic	0	Operating temperature	-20 °C to 40 °C
Lumen	1818 lm	Optic value	102°	Variants (DMX/RDM)	Compatible with EN/ IEC 60598-2-22: Suitable for emergency installations as central supply, non-maintained (Z0)
Efficacy	34 lm/W	CCT / CRI	RGBW30, RGBW40		
Driver option	Integral control gear	Dimming type	DMX, DMX/RDM		

Gavle 500



Accessories



Ceiling-mounting bracket (60 mm profile)
A81481



Xpress wireless switch
A90591



Recessing box
A61051



DMX Control System
Control-DMX



DMX/RDM Control System
Control-DMX-RDM