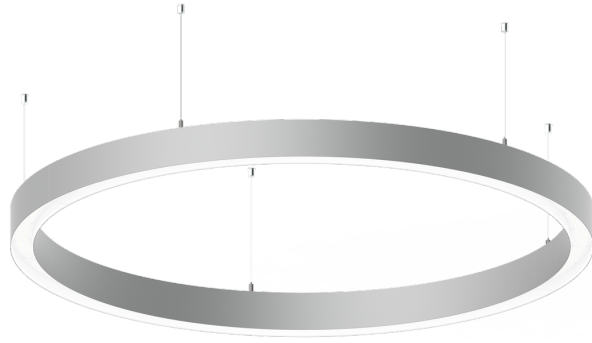


**GAVLE 6** (GAV-90303)**Product description**

Down (Optic) & Up (Optic 2nd) - 100x100 mm - 500 mm - RGBW

**Luminaire Structure**

- Remote driver (included)

**Optic**

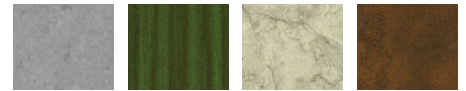
0 / 0

**Product colour**

01 - Black (RAL 9011)

03 - White (RAL 9003)

05 - Matt Silver (RAL 9006)

**Special finishes upon request**

SU01 - Concrete - Urban

SU02 - Softscape - Urban

SU03 - Stone - Urban

SU04 - Corten - Urban



SW01 - Oak - Woodland



SW02 - Walnut - Woodland



SW03 - Pine - Woodland

**GAVLE 6** (GAV-90303)

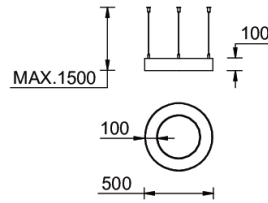
**Technical information**

|                      |                          |
|----------------------|--------------------------|
| <b>Material</b>      | Aluminium                |
| <b>Light source</b>  | 1152 & 1152 LED          |
| <b>Power</b>         | 82 W                     |
| <b>Lumen</b>         | 3023 lm                  |
| <b>Efficacy</b>      | 37 lm/W                  |
| <b>Driver option</b> | Remote driver (included) |

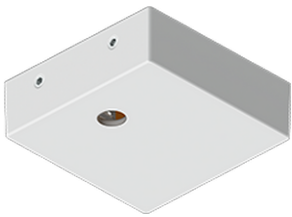
|                          |                       |
|--------------------------|-----------------------|
| <b>Driver</b>            | Constant current (CC) |
| <b>Input voltage</b>     | 250 mA,               |
| <b>Optic</b>             | 0                     |
| <b>Optic value</b>       | Opal                  |
| <b>Optic (2nd)</b>       | 0                     |
| <b>Optic (2nd) value</b> | Opal                  |

|                              |   |
|------------------------------|---|
| <b>CCT / CRI</b>             | RGBW40  |
| <b>Dimming type</b>          | Bluetooth   |
| <b>Product colours</b>       | Black, White, Matt Silver, Concrete - Urban, Softscape - Urban, Stone - Urban, Corten - Urban, Oak - Woodland, Walnut - Woodland, Pine - Woodland |
| <b>Weight</b>                | 5.5 kg  |
| <b>Operating temperature</b> | -20 °C to 40 °C   |
| <b>Variants (Bluetooth)</b>  | Compatible with EN/ IEC 60598-2-22: Suitable for emergency installations as central supply, non-maintained (Z0)                                   |

**Gavle 500**



**Accessories**



Supply cable surface mounting box  
**A80981**



Xpress wireless switch  
**A90591**



Recessing box  
**A61051**



DALI Control System  
**Control-DALI**