

GINO 2 (GI-31591)



Product description

Frosted diffuser - Down



Luminaire Structure

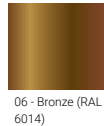
- Die-cast aluminium housing and frame
- Pre-treated before powder coating ensuring high corrosion resistance
- Single cable entry
- Stainless steel fasteners in grade 304 with zinc flake coating (ZFC)
- Durable silicone rubber gasket
- Frosted toughened glass
- Integral control gear
- Optional surface mounting box for easy wiring or conduit connection when wiring from behind is not possible

Optic

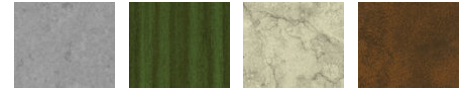


G

Product colour



Special finishes upon request



GINO 2 (GI-31591)

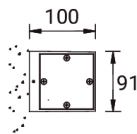
Technical information

Material	Aluminium
Light source	1 COB
Power	4.5 W
Lumen	219 - 236 lm
Efficacy	49 - 52 lm/W
Driver option	Integral control gear
Driver	Constant current (CC)
Input voltage	220-240 V 50/60 Hz

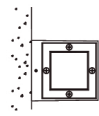
Optic	G
Optic value	91°
CCT / CRI	3000K CRI80, 4000K CRI80
Bug	B0-U0-G0
ULR	0%
ULOR	0%
CIE flux code n°3	97
Dimming type	On/Off

Product colours	Black, Dark Grey, White, Matt Silver, Bronze, Concrete - Urban, Softscape - Urban, Stone - Urban, Corten - Urban, Oak - Woodland, Walnut - Woodland, Pine - Woodland
Weight	1.0 kg
Operating temperature	-20 °C to 50 °C
Through wiring	Single cable entry
Lens / Reflector / Optic	Frosted toughened glass
MacAdam Ellipse	3 SDCM
Lifetime L90B10 (hours)	> 50,000
Variants (On/Off)	Compatible with EN/ IEC 60598-2-22: Suitable for emergency installations as central supply, non-maintained (Z0)

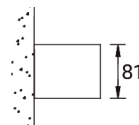
GI-31591



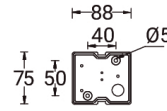
Top view



Bottom view



Side view



Accessories



Surface mounting box for easy cabling (GINO 2)
SCE-GINO-2