

HARRIER 2 (HA-60197-A)



Product description

Integral control gear - With recessing box - Square - Aluminium frame



Luminaire Structure

- Die-cast aluminium housing
- Pre-treated before powder coating ensuring high corrosion resistance
- 6 mm thick front ring in grade 316 stainless steel or aluminium
- Single cable entry, through wiring upon request
- One cable gland supplied with 1 m of 3x1.0 sqmm outdoor cable

- Stainless steel fasteners in grade 304 with zinc flake coating (ZFC)
- Durable silicone rubber gasket
- Clear toughened glass
- High-efficiency PMMA lens
- Integral control gear

- Recessing box in high-density polyethylene is included
- Suitable for walk-over with a maximum load of 200 kg

Optic



N M VW E

Product colour

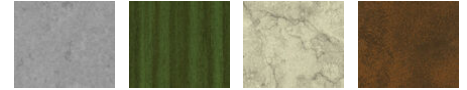


01 - Black (RAL 9011) 02 - Dark Grey (RAL 7043) 03 - White (RAL 9003) 05 - Matt Silver (RAL 9006)



06 - Bronze (RAL 6014)

Special finishes upon request



SU01 - Concrete - Urban SU02 - Softscape - Urban SU03 - Stone - Urban SU04 - Corten - Urban



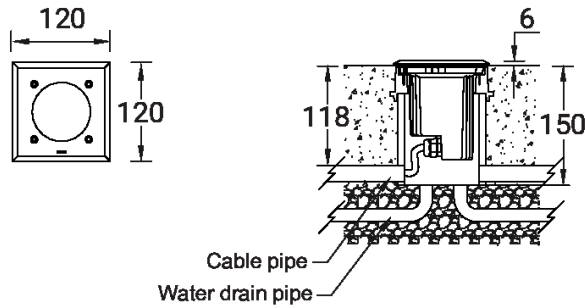
SW01 - Oak - Woodland SW02 - Walnut - Woodland SW03 - Pine - Woodland

HARRIER 2 (HA-60197-A)

Technical information

Material	Aluminium	Driver	Constant current (CC)	Product colours	Black, Dark Grey, White, Matt Silver, Bronze, Concrete - Urban, Softscape - Urban, Stone - Urban, Corten - Urban, Oak - Woodland, Walnut - Woodland, Pine - Woodland
Light source	MR16-GU10	Input voltage	220-240 V 50/60 Hz		
Power	7.5 W	Optic	N, M, VW, E	Weight	0.5 kg
Lumen	260 - 402 lm	Optic value	13°, 22°, 58°, 12°x50°	Operating temperature	-20 °C to 50 °C
Efficacy	35 - 54 lm/W	CCT / CRI	3000K CRI95, 4000K CRI95	Cable	One cable gland supplied with 1 m of 3x1.0 sqmm outdoor cable
Driver option	Integral control gear	Dimming type	On/Off	Through wiring	Single cable entry, through wiring upon request
				Lens / Reflector / Optic	Clear toughened glass, High-efficiency PMMA lens

HA-60197-A



Accessories



Connector IP68 3 Pin Power
A62591



Connector IP68 5 Pin Power +
Signal
A613191