

ITAC 1 (IT-31963)



Product description

Flat diffuser - TW



Luminaire Structure

- Die-cast aluminium housing and frame
- Pre-treated before powder coating ensuring high corrosion resistance
- Two cable entries for through wiring

- Stainless steel fasteners in grade 304 with zinc flake coating (ZFC)
- Durable silicone rubber gasket
- Opal UV-stabilised polycarbonate diffuser

- Integral control gear
- Optional surface mounting box for easy wiring or conduit connection when wiring from behind is not possible

Optic



G

Product colour

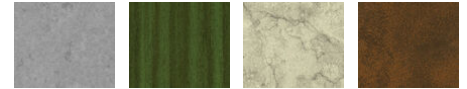


01 - Black (RAL 9011) 02 - Dark Grey (RAL 7043) 03 - White (RAL 9003) 05 - Matt Silver (RAL 9006)

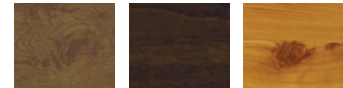


06 - Bronze (RAL 6014)

Special finishes upon request



SU01 - Concrete - Urban SU02 - Softscape - Urban SU03 - Stone - Urban SU04 - Corten - Urban



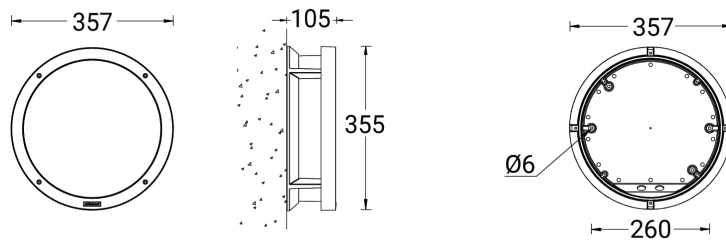
SW01 - Oak - Woodland SW02 - Walnut - Woodland SW03 - Pine - Woodland

ITAC 1 (IT-31963)

Technical information

Material	Aluminium	Optic	G	Product colours	Black, Dark Grey, White, Matt Silver, Bronze, Concrete - Urban, Softscape - Urban, Stone - Urban, Corten - Urban, Oak - Woodland, Walnut - Woodland, Pine - Woodland
Light source	160 LED	Optic value	115°x115°	Weight	2.9 kg
Power	20 W	CCT / CRI	TW (2700K - 6500K)	Operating temperature	-20 °C to 50 °C
Lumen	1684 lm	Bug	B1-U3-G1	Through wiring	Two cable entries for through wiring
Efficacy	84 lm/W	ULR	9.25%	Lens / Reflector / Optic	Opal UV-stabilised polycarbonate diffuser
Driver option	Integral control gear	ULOR	9.25%	Variants (DALI)	Compatible with EN/ IEC 60598-2-22: Suitable for emergency installations as central supply, non-maintained (Z0)
Driver	Constant current (CC)	CIE flux code n°3	94		
Input voltage	220-240 V 50/60 Hz	Dimming type	DALI		

IT-31963



Accessories



Surface mounting box for easy cabling (ITAC 1)
SCE-ITAC-1