

**ITAC 2 (IT-31972) (Version 2)**



**Product description**

Dome diffuser



**Luminaire Structure**

- Die-cast aluminium housing and frame
- Pre-treated before powder coating ensuring high corrosion resistance
- Two cable entries for through wiring

- Stainless steel fasteners in grade 304 with zinc flake coating (ZFC)
- Durable silicone rubber gasket
- Opal UV-stabilised polycarbonate diffuser

- Integral control gear
- Optional surface mounting box for easy wiring or conduit connection when wiring from behind is not possible

**Optic**



G

**Product colour**

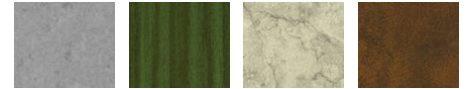


01 - Black (RAL 9011)    02 - Dark Grey (RAL 7043)    03 - White (RAL 9003)    05 - Matt Silver (RAL 9006)

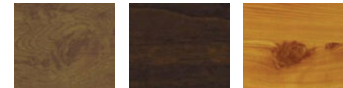


06 - Bronze (RAL 6014)

**Special finishes upon request**



SU01 - Concrete - Urban    SU02 - Softscape - Urban    SU03 - Stone - Urban    SU04 - Corten - Urban



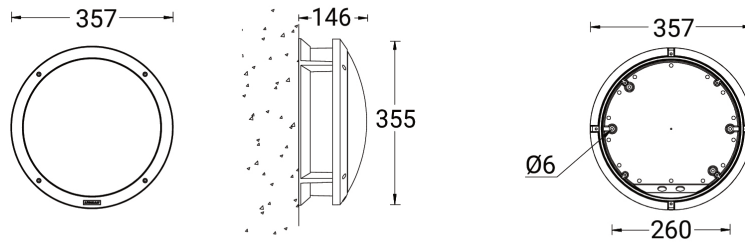
SW01 - Oak - Woodland    SW02 - Walnut - Woodland    SW03 - Pine - Woodland

**ITAC 2 (IT-31972) (Version 2)**

**Technical information**

<b>Material</b>	Aluminium	<b>Optic</b>	G	<b>Product colours</b>	Black, Dark Grey, White, Matt Silver, Bronze, Concrete - Urban, Softscape - Urban, Stone - Urban, Corten - Urban, Oak - Woodland, Walnut - Woodland, Pine - Woodland
<b>Light source</b>	80 LED	<b>Optic value</b>	120°x180°		
<b>Power</b>	20 W	<b>CCT / CRI</b>	3000K CRI80, 4000K CRI80	<b>Weight</b>	2.9 kg
<b>Lumen</b>	1676 - 1764 lm	<b>Bug</b>	B0-U2-G1	<b>Operating temperature</b>	-20 °C to 50 °C
<b>Efficacy</b>	84 - 88 lm/W	<b>ULR</b>	9%	<b>Through wiring</b>	Two cable entries for through wiring
<b>Driver option</b>	Integral control gear	<b>ULOR</b>	9%	<b>Lens / Reflector / Optic</b>	Opal UV-stabilised polycarbonate diffuser Compatible with EN/ IEC 60598-2-22: Suitable for emergency installations as central supply, non-maintained (Z0)
<b>Driver</b>	Constant current (CC)	<b>CIE flux code n°3</b>	91	<b>Variants (On/Off, 1-10V, DALI)</b>	
<b>Input voltage</b>	220-240 V 50/60 Hz	<b>Dimming type</b>	On/Off, 1-10V, DALI		

**IT-31972**



**Accessories**



Surface mounting box for easy cabling (ITAC 2)  
**SCE-ITAC-2**



DALI Control System  
**Control-DALI**