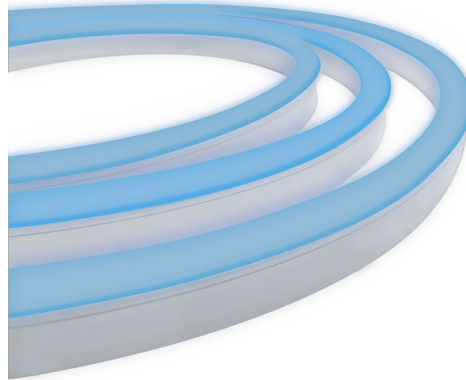


NEON 10 (ITNO12RGB01067-CL-HB)



Product description

CLASSIC - RGB



Luminaire Structure

- UV & flame resistant, chemical & salt stable PVC
- 24V DC

- CRI 80
- L80 B10: 50,000 hours

- Needs to be ordered with a specific length and the type of cable entry required

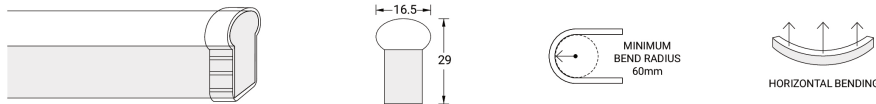
Variant code	Lumen	Efficacy	CCT / CRI
ITNO12RGB01067-CL-HB	170 lm/m	14 lm/W	RGB

NEON 10 (ITNO12RGB01067-CL-HB)

Technical information

Power	12 W/m	Optic	180°	Dimensions	Width: 16.5 mm × Height: 29 mm (Base: 11.5 mm)
Driver option	Remote driver (not included)	Lifetime L80B10 (hours)	> 50,000	Warranty	5 years
Driver	Constant voltage (CV)	Maximum run per power feed	Static full loading* 7 m using one feed, 14 m using two feeds, Dynamic operating** 10 m using one feed 20 m using two feeds	Notes	R: 615–625 nm, G: 520–530 nm, B: 465–475 nm. Electrical & optical data variance +/-10%.
Input voltage	24V DC				
Operating temperature	-20°C ~ +45°C	Cutting length	100 mm		
		Control	Constant voltage dimmer (3 Channel)	Minimum bend radius	60 mm
				Bend direction	Horizontal

ITNO12RGB01067-CL-HB



Accessories



Slimline injection moulding - IP67 Side feed - 1 m
A80086



Slimline injection moulding - IP67 Bottom feed - 1 m
A80087



Slimline injection moulding - IP67 Top End feed - 1 m
A80088



Slimline injection moulding - IP67 Middle feed - 1 m
A80089



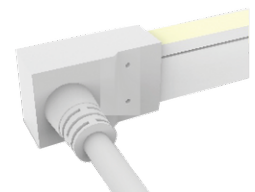
Slimline injection moulding - IP67 End cap
A80090



Slimline injection moulding - Flexible connector IP67 - 300 mm
A80091

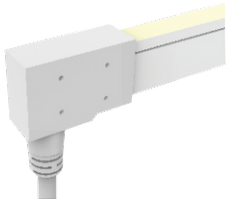


Slimline injection moulding - IP67 T-Feed - 300 mm + 1 m
A80092



Capped dual injection moulding - IP68 Side Feed - 1 m
A80093

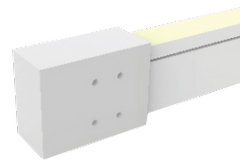
NEON 10 (ITNO12RGB01067-CL-HB)



Capped dual injection moulding -
IP68 Bottom Feed - 1 m
A80094



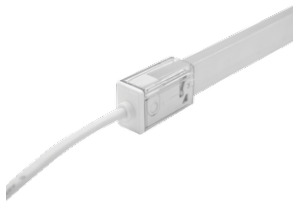
Capped dual injection moulding -
IP68 Top End Feed - 1 m
A80095



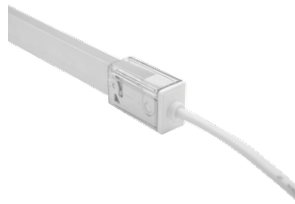
Capped dual injection moulding -
IP68 End Cap
A80096



Capped dual injection moulding -
Flexible connector IP68 - 300
mm
A80097



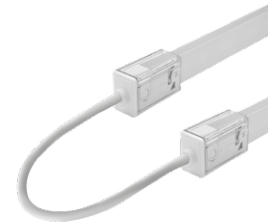
Snap - Top feed connector IP67 -
01 - RGB - CLASSIC
A80083-007



Snap - Top feed connector IP67 -
02 - RGB - CLASSIC
A80083-008



Snap - End cap IP67 - 02 -
CLASSIC
A80084-002



Snap - Flexible connector IP67 -
SINGLE COLOUR - CLASSIC
A80085-002



Driver (CV) - PWM - 100 W - IP65
- 24 V
A33191-PW



Driver (CV) - PWM - 150 W - IP65
- 24 V
A33291-PW



Driver (CV) - PWM - 250 W - IP65
- 24 V
A33391-PW



Driver (CV) - PWM - 320 W - IP65
- 24 V
A33491-PW



Constant voltage dimmer - 4
Channel
A610291



Driver (CV) - On/Off - 60 W - IP67
- 24 V
A34591-ND



Driver (CV) - On/Off - 100 W -
IP67 - 24 V
A34791-ND



Driver (CV) - On/Off - 150 W -
IP67 - 24 V
A34891-ND