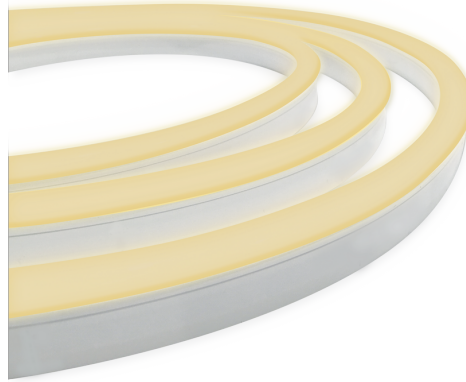


**NEON 7** (ITNO12XXXX1067-CL-HB)



**Product description**

CLASSIC



**Luminaire Structure**

- UV & flame resistant, chemical & salt stable PVC  
- 24V DC

- CRI 80  
- L80 B10: 50,000 hours

- Needs to be ordered with a specific length and the type of cable entry required

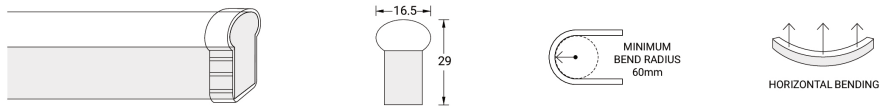
Variant code	Lumen	Efficacy	CCT / CRI
ITNO1230001067-CL-HB	130 lm/m	11 lm/W	3000K CRI80
ITNO1240001067-CL-HB	130 lm/m	11 lm/W	4000K CRI80

**NEON 7 (ITNO12XXXX1067-CL-HB)**

**Technical information**

<b>Power</b>	12 W/m	<b>Optic</b>	180°	<b>Dimensions</b>	Width: 16.5 mm x Height: 29 mm (Base: 11.5 mm)
<b>Driver option</b>	Remote driver (not included)	<b>Lifetime L80B10 (hours)</b>	> 50,000	<b>Warranty</b>	5 years
<b>Driver</b>	Constant voltage (CV)	<b>Maximum run per power feed</b>	10 m using one feed, 20 m using two feeds	<b>Notes</b>	Colour variance 3000K+/-175K, 4000K+/-275K. Electrical & optical data variance +/-10%.
<b>Input voltage</b>	24V DC	<b>Cutting length</b>	83.3 mm	<b>Minimum bend radius</b>	60 mm
<b>Operating temperature</b>	-20°C ~ +45°C	<b>Control</b>	Constant voltage dimmer (1 Channel)	<b>Bend direction</b>	Horizontal

ITNO12XXXX1067-CL-HB



**Accessories**



Slimline injection moulding - IP67 Side feed - 1 m  
**A80086**



Slimline injection moulding - IP67 Bottom feed - 1 m  
**A80087**



Slimline injection moulding - IP67 Top End feed - 1 m  
**A80088**



Slimline injection moulding - IP67 Middle feed - 1 m  
**A80089**



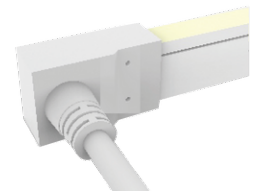
Slimline injection moulding - IP67 End cap  
**A80090**



Slimline injection moulding - Flexible connector IP67 - 300 mm  
**A80091**

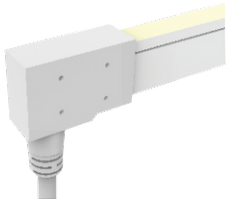


Slimline injection moulding - IP67 T-Feed - 300 mm + 1 m  
**A80092**



Capped dual injection moulding - IP68 Side Feed - 1 m  
**A80093**

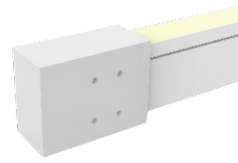
**NEON 7 (ITNO12XXXX1067-CL-HB)**



Capped dual injection moulding -  
IP68 Bottom Feed - 1 m  
**A80094**



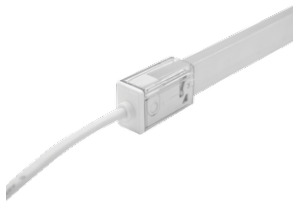
Capped dual injection moulding -  
IP68 Top End Feed - 1 m  
**A80095**



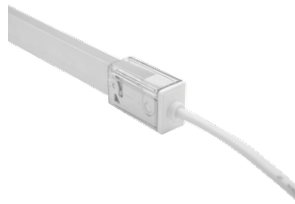
Capped dual injection moulding -  
IP68 End Cap  
**A80096**



Capped dual injection moulding -  
Flexible connector IP68 - 300  
mm  
**A80097**



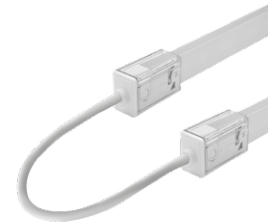
Snap - Top feed connector IP67 -  
01 - SINGLE COLOUR - CLASSIC  
**A80083-003**



Snap - Top feed connector IP67 -  
02 - SINGLE COLOUR - CLASSIC  
**A80083-004**



Snap - End cap IP67 - 02 -  
CLASSIC  
**A80084-002**



Snap - Flexible connector IP67 -  
TUNEABLE WHITE - CLASSIC  
**A80085-003**



Driver (CV) - PWM - 100 W - IP65  
- 24 V  
**A33191-PW**



Driver (CV) - PWM - 150 W - IP65  
- 24 V  
**A33291-PW**



Driver (CV) - PWM - 250 W - IP65  
- 24 V  
**A33391-PW**



Driver (CV) - PWM - 320 W - IP65  
- 24 V  
**A33491-PW**



Constant voltage dimmer - 4  
Channel  
**A610291**



Driver (CV) - On/Off - 60 W - IP67  
- 24 V  
**A34591-ND**



Driver (CV) - On/Off - 100 W -  
IP67 - 24 V  
**A34791-ND**



Driver (CV) - On/Off - 150 W -  
IP67 - 24 V  
**A34891-ND**