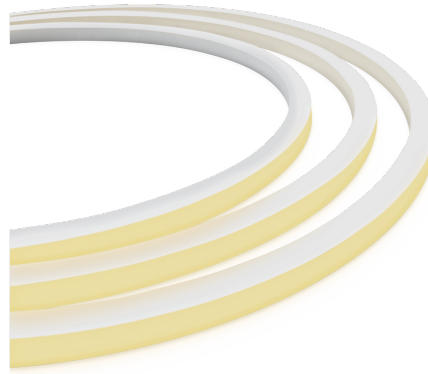


NEON 1 (ITNO12XXXX1067-VB)**Product description**

ARC

**Luminaire Structure**

- UV & flame resistant, chemical & salt stable PVC
- 24V DC

- CRI 80
- L80 B10: 50,000 hours

- Needs to be ordered with a specific length and the type of cable entry required

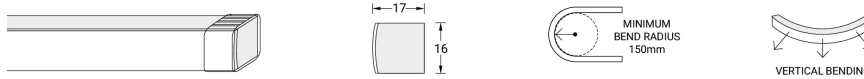
Variant code	Lumen	Efficacy	CCT / CRI
ITNO1230001067-VB	420 lm/m	35 lm/W	3000K CRI80
ITNO1240001067-VB	480 lm/m	40 lm/W	4000K CRI80

NEON 1 (ITNO12XXXX1067-VB)

Technical information

Power	12 W/m	Optic	160°	Dimensions	Width: 16 mm x Height: 17 mm
Driver option	Remote driver (not included)	Lifetime L80B10 (hours)	> 50,000	Warranty	5 years
Driver	Constant voltage (CV)	Maximum run per power feed	10 m using one feed, 20 m using two feeds	Notes	Colour variance 3000K+/-175K, 4000K+/-275K. Electrical & optical data variance +/-10%.
Input voltage	24V DC	Cutting length	55.6 mm	Minimum bend radius	150 mm
Operating temperature	-20°C ~ +45°C	Control	Constant voltage dimmer (1 Channel)	Bend direction	Vertical

ITNO12XXXX1067-VB



Accessories



Slimline injection moulding -
IP67 Side feed - 1 m
A80086



Slimline injection moulding -
IP67 Bottom feed - 1 m
A80087



Slimline injection moulding -
IP67 Top End feed - 1 m
A80088



Slimline injection moulding -
IP67 Middle feed - 1 m
A80089



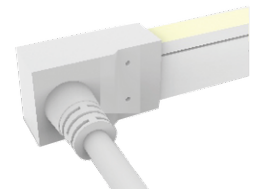
Slimline injection moulding -
IP67 End cap
A80090



Slimline injection moulding -
Flexible connector IP67 - 300
mm
A80091

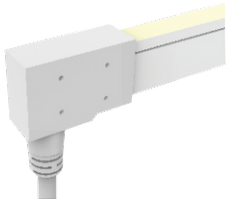


Slimline injection moulding -
IP67 T-Feed - 300 mm + 1 m
A80092



Capped dual injection moulding -
IP68 Side Feed - 1 m
A80093

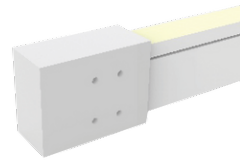
NEON 1 (ITNO12XXXX1067-VB)



Capped dual injection moulding -
IP68 Bottom Feed - 1 m
A80094



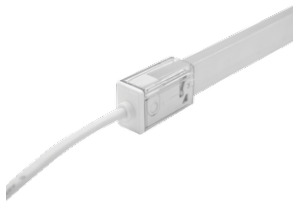
Capped dual injection moulding -
IP68 Top End Feed - 1 m
A80095



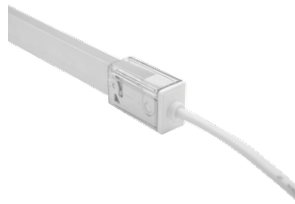
Capped dual injection moulding -
IP68 End Cap
A80096



Capped dual injection moulding -
Flexible connector IP68 - 300
mm
A80097



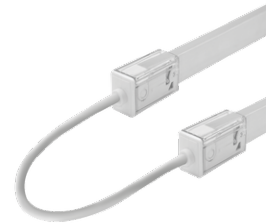
Snap - Top feed connector IP67 -
01 - SINGLE COLOUR - ARC
A80083-001



Snap - Top feed connector IP67 -
02 - SINGLE COLOUR - ARC
A80083-002



Snap - End cap IP67 - 02 -
SINGLE COLOUR - ARC
A80084-001



Snap - Flexible connector IP67 -
SINGLE COLOUR - ARC
A80085-001



Driver (CV) - PWM - 100 W - IP65
- 24 V
A33191-PW



Driver (CV) - PWM - 150 W - IP65
- 24 V
A33291-PW



Driver (CV) - PWM - 250 W - IP65
- 24 V
A33391-PW



Driver (CV) - PWM - 320 W - IP65
- 24 V
A33491-PW



Constant voltage dimmer - 4
Channel
A610291



Driver (CV) - On/Off - 60 W - IP67
- 24 V
A34591-ND



Driver (CV) - On/Off - 100 W -
IP67 - 24 V
A34791-ND



Driver (CV) - On/Off - 150 W -
IP67 - 24 V
A34891-ND