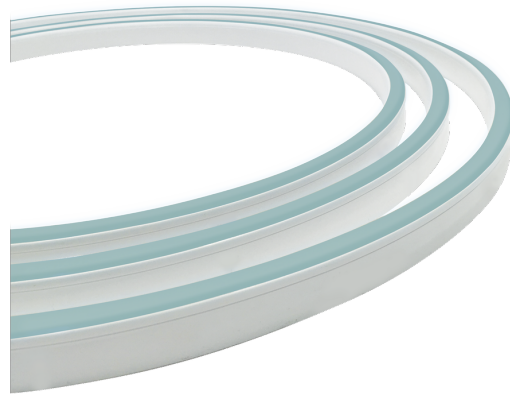


**NEON 16 (ITNO15RGBW0567-ED-HB)**



**Product description**

EDGE - RGBW



**Luminaire Structure**

- UV & flame resistant, chemical & salt stable PVC  
- 24V DC

- CRI 80  
- L80 B10: 50,000 hours

- Needs to be ordered with a specific length and the type of cable entry required

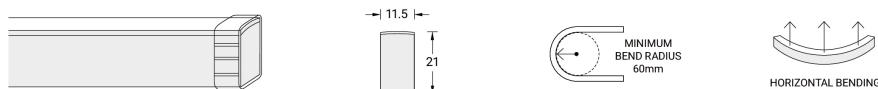
Variant code	Lumen	Efficacy	CCT / CRI
ITNO15RGBW0565-ED-HB	255 lm/m	17 lm/W	RGBW30

**NEON 16 (ITNO15RGBW0567-ED-HB)**

**Technical information**

<b>Power</b>	15 W/m	<b>Optic</b>	160°	<b>Dimensions</b>	Width: 11.5 mm × Height: 21 mm
<b>Driver option</b>	Remote driver (not included)	<b>Lifetime L80B10 (hours)</b>	> 50,000	<b>Warranty</b>	5 years
<b>Driver</b>	Constant voltage (CV)	<b>Maximum run per power feed</b>	5 m using one feed, 10 m using two feeds	<b>Notes</b>	R: 615–625 nm, G: 520–530 nm, B: 460–475 nm, W: 3000K+/-175K. Electrical & optical data variance +/-10%.
<b>Input voltage</b>	24V DC	<b>Cutting length</b>	100 mm	<b>Minimum bend radius</b>	60 mm
<b>Operating temperature</b>	-20°C ~ +45°C	<b>Control</b>	Constant voltage dimmer (4 Channel)	<b>Bend direction</b>	Horizontal

ITNO15RGBW0567-ED-HB



**Accessories**



Slimline injection moulding - IP67 Side feed - 1 m  
**A80086**



Slimline injection moulding - IP67 Bottom feed - 1 m  
**A80087**



Slimline injection moulding - IP67 Top End feed - 1 m  
**A80088**



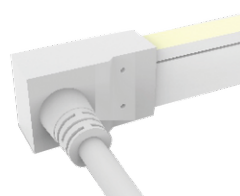
Slimline injection moulding - IP67 End cap  
**A80090**



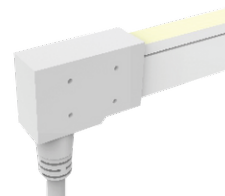
Slimline injection moulding - Flexible connector IP67 - 300 mm  
**A80091**



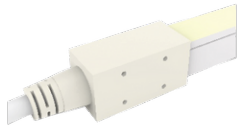
Slimline injection moulding - IP67 T-Feed - 300 mm + 1 m  
**A80092**



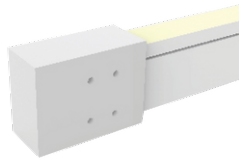
Capped dual injection moulding - IP68 Side Feed - 1 m  
**A80093**



Capped dual injection moulding - IP68 Bottom Feed - 1 m  
**A80094**

**NEON 16 (ITNO15RGBW0567-ED-HB)**

Capped dual injection moulding -  
IP68 Top End Feed - 1 m

**A80095**

Capped dual injection moulding -  
IP68 End Cap

**A80096**

Capped dual injection moulding -  
Flexible connector IP68 - 300  
mm

**A80097**

Driver (CV) - PWM - 100 W - IP65  
- 24 V

**A33191-PW**

Driver (CV) - PWM - 150 W - IP65  
- 24 V

**A33291-PW**

Driver (CV) - PWM - 250 W - IP65  
- 24 V

**A33391-PW**

Driver (CV) - PWM - 320 W - IP65  
- 24 V

**A33491-PW**

Constant voltage dimmer - 4  
Channel

**A610291**

Driver (CV) - On/Off - 60 W - IP67  
- 24 V

**A34591-ND**

Driver (CV) - On/Off - 100 W -  
IP67 - 24 V

**A34791-ND**

Driver (CV) - On/Off - 150 W -  
IP67 - 24 V

**A34891-ND**