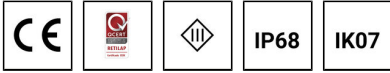
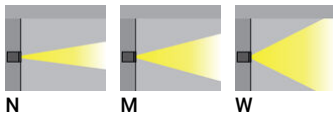


JANET 2 (JA-60811) (Version 1)**Product description**

Without remote box IP-rated - With remote driver / recessing box - Constant current (CC) 700 mA

**Luminaire Structure**

- Stainless steel body in grade 316
- Single cable entry
- One cable gland supplied with 2 m of 2x1.0 sqmm outdoor cable
- Stainless steel fasteners in grade 316
- Durable silicone rubber gasket
- Clear toughened glass
- Remote driver (included)
- Remote box IP-rated is not included and is to be ordered separately for constant current (CC) products
- Recessing box in stainless steel 316 grade
- Luminaire must be submerged when operational
- Maximum depth 2 m
- Outdoor cable needs to be ordered with a specific length

Optic**Product colour**

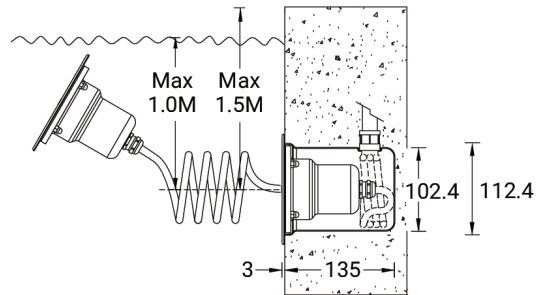
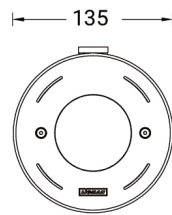
00 - Stainless Steel

JANET 2 (JA-60811) (Version 1)

Technical information

Material	Stainless Steel	Optic	N, M, W	Product colours	Stainless Steel
Light source	5 LED	Optic value	23°, 34°, 42°	Weight	1.6 kg
Power	11 W	CCT / CRI	2700K CRI80, 3000K CRI80, 4000K CRI80	Operating temperature	-20 °C to 50 °C
Lumen	1240 - 1726 lm	Bug	B1-U0-G0, B2-U0-G0	Cable	One cable gland supplied with 2 m of 2x1.0 sqmm outdoor cable
Efficacy	113 - 157 lm/W	ULR	0%	Through wiring	Single cable entry
Driver option	Remote driver (included)	ULOR	0%	Lens / Reflector / Optic	Clear toughened glass
Driver	Constant current (CC)	CIE flux code n°3	100		
Input voltage	700 mA, 15 VDC	Dimming type	On/Off, 1-10V		

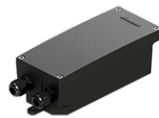
JA-60811



Accessories



DALI Control System
Control-DALI



Remote box IP65
A80291