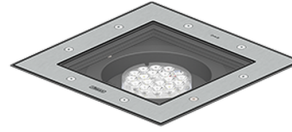


KIOS 8 (KI-60805)**Product description**

With recessing box / driver - Flat frame - Adjustable:
Tilt 5° or 10° (2 step)

**Luminaire Structure**

- Die-cast aluminium housing
- Pre-treated before powder coating ensuring high corrosion resistance
- 5.5 mm thick front ring in grade 316 stainless steel
- Single cable entry, through wiring upon request
- Stainless steel fasteners in grade 304 with zinc flake coating (ZFC)
- Durable silicone rubber gasket
- Clear toughened glass
- High-efficiency PMMA lens
- Integral control gear
- Recessing box in high-density polyethylene is included
- Suitable for drive-over with a maximum load of 2000 kg
- Vehicles with pneumatic tires can drive over the luminaire but the speed must not exceed 50 km/h
- Load is transferred by the housing to the foundation
- The distance between the floodlight and the illuminated surface should be at least 0.5 m

Optic

VN

Product colour

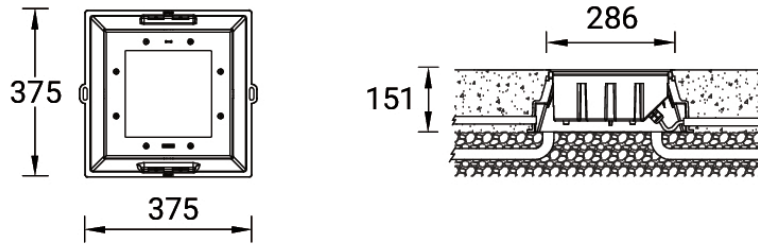
00 - Stainless Steel

KIOS 8 (KI-60805)

Technical information

Material	Stainless Steel	Optic value	8°	Through wiring	Single cable entry, through wiring upon request
Light source	7 LED	CCT / CRI	3000K CRI80, 4000K CRI80	Lens / Reflector / Optic	Clear toughened glass, High-efficiency PMMA lens
Power	33 W	Bug	B0-U5-G0	MacAdam Ellipse	3 SDCM
Lumen	3091 - 3320 lm	ULR	100%	Lifetime L90B10 (hours)	> 109,000
Efficacy	94 - 101 lm/W	ULOR	100%	Lifetime L80B10 (hours)	> 109,000
Driver option	Integral control gear	Dimming type	On/Off, 1-10V, DALI	Lifetime L80B50 (hours)	> 109,000
Driver	Constant current (CC)	Product colours	Stainless Steel	Variants (On/Off, 1-10V, DALI)	Compatible with EN/ IEC 60598-2-22: Suitable for emergency installations as central supply, non-maintained (Z0)
Input voltage	220-240 V 50/60 Hz	Weight	8.2 kg		
Optic	VN	Operating temperature	-20 °C to 40 °C		

KI-60805



Accessories



Anti slip glass
A61612



Connector IP68 3 Pin Power
A62591



DALI Control System
Control-DALI



Connector IP68 5 Pin Power + Signal
A613191