

LIGHTALK 6 (LA-30001)



Product description

Integral control gear - 610 mm - Class I



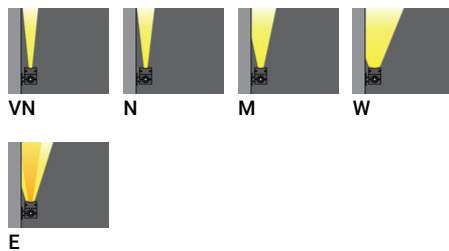
Luminaire Structure

- Die-cast aluminium end-caps
- Extruded aluminium housing and sheet aluminium front frame
- Pre-treated before powder coating ensuring high corrosion resistance
- Single cable entry, through wiring upon request

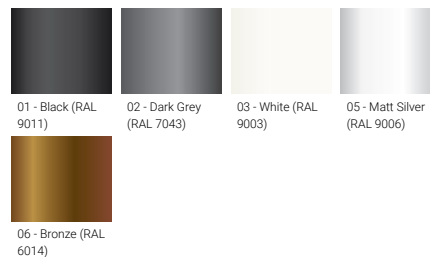
- One IP67 connector supplied with 0.2 m of 3x1.0 sqmm outdoor cable
- Stainless steel fasteners in grade 304 with zinc flake coating (ZFC)
- Durable silicone rubber gasket
- Clear toughened glass

- Integral control gear
- Remote box IP-rated is not included and is to be ordered separately for constant current (CC) products
- 24 VDC input, DMX/RDM address with stable signal

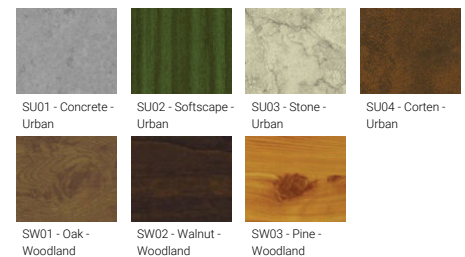
Optic



Product colour



Special finishes upon request

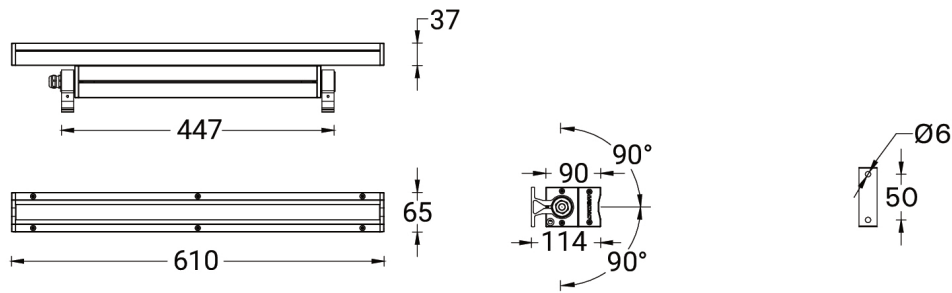


LIGHTALK 6 (LA-30001)

Technical information

Material	Aluminium	Optic value	12°, 14°, 24°, 44°, 18° x 35°	Cable	One IP67 connector supplied with 0.2 m of 3x1.0 sqmm outdoor cable
Light source	18 LED	CCT / CRI	3000K CRI80, 4000K CRI80	Through wiring	Single cable entry, through wiring upon request
Power	28 W	Bug	B0-U5-G0	Lens / Reflector / Optic	Clear toughened glass
Lumen	1943 - 2847 lm	ULR	100%	MacAdam Ellipse	3 SDCM
Efficacy	69 - 102 lm/W	ULOR	100%	Lifetime L90B10 (hours)	> 120,000
Driver option	Integral control gear	Dimming type	On/Off, 1-10V, DALI	Lifetime L80B10 (hours)	> 120,000
Driver	Constant current (CC)		Black, Dark Grey, White, Matt Silver, Bronze, Concrete - Urban, Softscape - Urban, Stone - Urban, Corten - Urban, Oak - Woodland, Walnut - Woodland, Pine - Woodland	Lifetime L80B50 (hours)	> 120,000
Input voltage	220-240 V 50/60 Hz	Product colours		Variants (On/Off, 1-10V, DALI)	Compatible with EN/ IEC 60598-2-22: Suitable for emergency installations as central supply, non-maintained (Z0)
Optic	VN, N, M, W, E	Weight	3.6 kg		
		Operating temperature	-20 °C to 40 °C		

LA-30001



Accessories



150 mm extend arm mounting
A30991



300 mm extend arm mounting
A31091



450 mm extend arm mounting
A31191



75 mm extend arm mounting
A30891

LIGHTALK 6 (LA-30001)



DALI Control System
Control-DALI