

LADOR 13 (LD-20021)



Product description

Supplied with specific 4 m square, straight aluminium pole: APC140102-LD



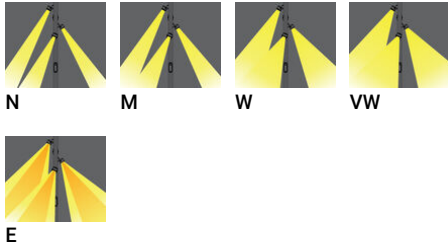
Luminaire Structure

- Die-cast aluminium housing
- Pre-treated before powder coating ensuring high corrosion resistance
- Thermal heat dissipation body
- Single cable entry, through wiring upon request
- One cable gland supplied with 2 m of 3x1.0 sqmm outdoor cable

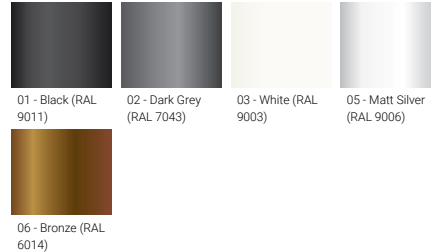
- Stainless steel fasteners in grade 304 with zinc flake coating (ZFC)
- Durable silicone rubber gasket
- High-efficiency PMMA lens
- Clear toughened glass
- Integral control gear

- Maximum wind load resistance is 140 km/h
- Surge protection 10kV

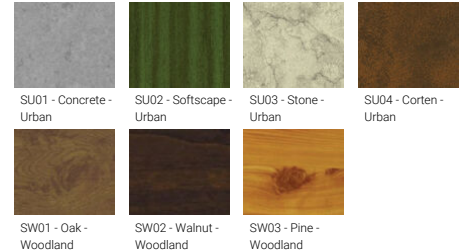
Optic

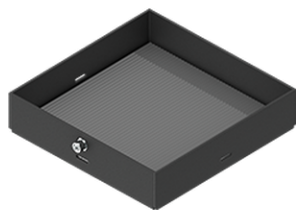


Product colour



Special finishes upon request



LADOR 13 (LD-20021)

Linear spread lens

A51414

Please contact the factory for technical details if you wish to use Anti-glare accessories, Colour filters, Lenses and slip glasses in combination.