

LADOR 37 (LD-20041)



Product description

Supplied with specific 4 m square, straight aluminium pole: APC140102-LD - RGBW



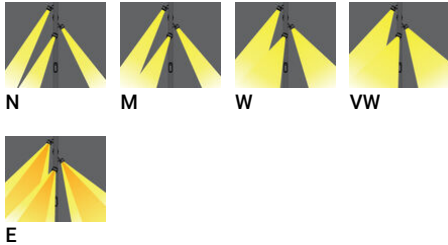
Luminaire Structure

- Die-cast aluminium housing
- Pre-treated before powder coating ensuring high corrosion resistance
- Thermal heat dissipation body
- Single cable entry, through wiring upon request
- One cable gland supplied with 2 m of 5x1.5 sqmm outdoor cable

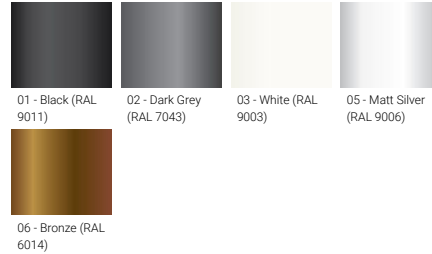
- Stainless steel fasteners in grade 304 with zinc flake coating (ZFC)
- Durable silicone rubber gasket
- High-efficiency PMMA lens
- Clear toughened glass
- Integral control gear

- Maximum wind load resistance is 140 km/h
- Surge protection 10kV

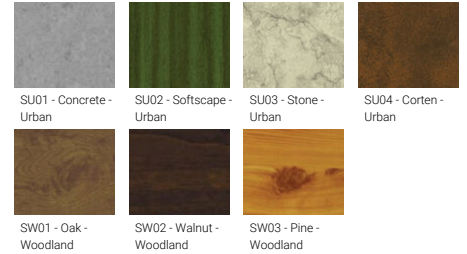
Optic



Product colour



Special finishes upon request



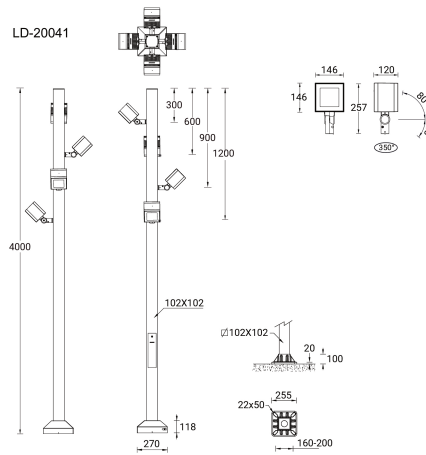
LADOR 37 (LD-20041)

Technical information

Material	Aluminium
Light source	4 x 16 LED
Power	112 W
Lumen	5288 - 6400 lm
Efficacy	47 - 57 lm/W
Driver option	Integral control gear
Driver	Constant current (CC)

Input voltage	220-240 V 50/60 Hz
Optic	N, M, W, VW, E
Optic value	8°, 17°, 26°, 65°, 43°x11°
CCT / CRI	RGBW30, RGBW40
Dimming type	DMX, DMX/RDM
Product colours	Black, Dark Grey, White, Matt Silver, Bronze, Concrete - Urban, Softscape - Urban, Stone - Urban, Corten - Urban, Oak - Woodland, Walnut - Woodland, Pine - Woodland
Weight	24.7 kg

Operating temperature	-20 °C to 40 °C
Cable	One cable gland supplied with 2 m of 5x1.5 sqmm outdoor cable
Through wiring	Single cable entry, through wiring upon request
Lens / Reflector / Optic	High-efficiency PMMA lens, Clear toughened glass
Variants (DMX/RDM)	Compatible with EN/ IEC 60598-2-22: Suitable for emergency installations as central supply, non-maintained (Z0)



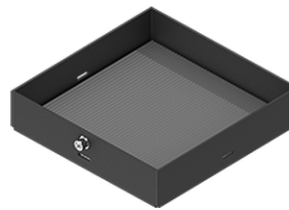
Accessories



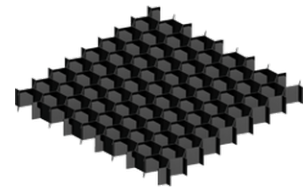
DMX Control System
Control-DMX



DMX/RDM Control System
Control-DMX-RDM



Linear spread lens
A51414



Honeycomb louvre
A52121

LADOR 37 (LD-20041)

Anti-glare visor
A53131



4 m - Square, straight aluminium
pole for LADOR
APC140102-LD

Please contact the factory for technical details if you wish to use Anti-glare accessories, Colour filters, Lenses and slip glasses in combination.