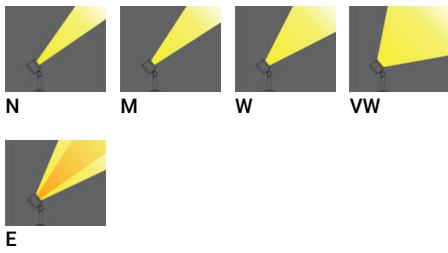
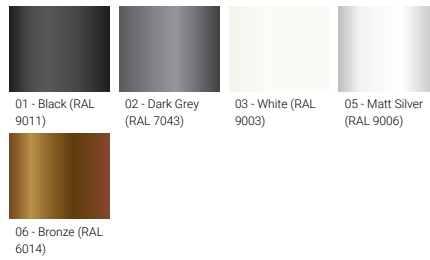
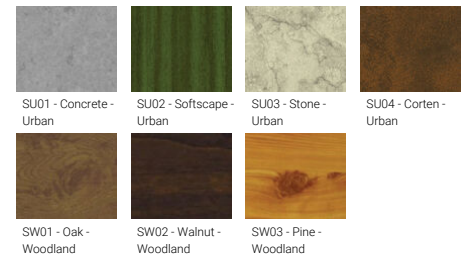


**LADOR 24** (LD-50121)**Product description**

Thread knuckle mounted - 63x63 mm

**Luminaire Structure**

- Single cable entry
- High-efficiency PMMA lens
- Clear toughened glass
- Integral control gear

**Optic****Product colour****Special finishes upon request**

**LADOR 24** (LD-50121)

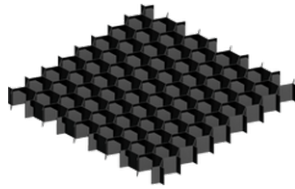
**Technical information**

<b>Material</b>	Aluminium	<b>Input voltage</b>	220-240 V 50/60 Hz	<b>CIE flux code n°3</b>	100
<b>Light source</b>	1 LED	<b>Optic</b>	N, M, W, VW, E	<b>Dimming type</b>	On/Off
<b>Power</b>	3 W	<b>Optic value</b>	10°, 19°, 33°, 71°, 41°x14°	<b>Product colours</b>	Black, Dark Grey, White, Matt Silver, Bronze, Concrete - Urban, Softscape - Urban, Stone - Urban, Corten - Urban, Oak - Woodland, Walnut - Woodland, Pine - Woodland
<b>Lumen</b>	149 - 222 lm	<b>CCT / CRI</b>	3000K CRI80, 4000K CRI80		
<b>Efficacy</b>	50 - 74 lm/W	<b>Bug</b>	B0-U1-G0		
<b>Driver option</b>	Integral control gear	<b>ULR</b>	0%		
<b>Driver</b>	Constant current (CC)	<b>ULOR</b>	0%	<b>Weight</b>	1.36 kg
				<b>Operating temperature</b>	-20 °C to 40 °C
				<b>Through wiring</b>	Single cable entry
				<b>Lens / Reflector / Optic</b>	High-efficiency PMMA lens, Clear toughened glass

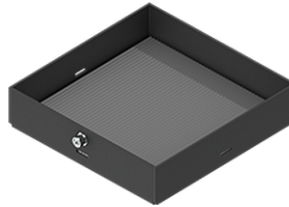
**Accessories**



Anti-glare visor  
**A52831**



Honeycomb louvre  
**A51821**



Linear spread lens  
**A51114**

Please contact the factory for technical details if you wish to use Anti-glare accessories, Colour filters, Lenses and slip glasses in combination.