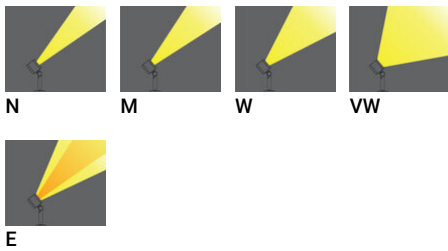
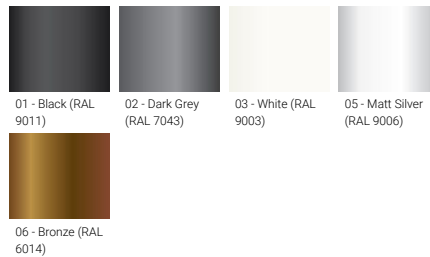
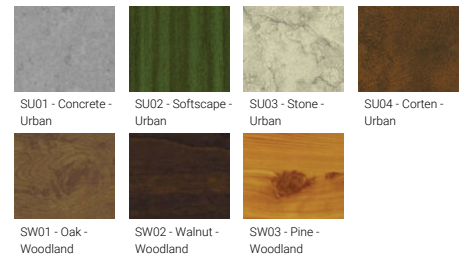


**LADOR 25 (LD-50131)****Product description**

Thread knuckle mounted - 83x83 mm

**Luminaire Structure**

- Single cable entry
- High-efficiency PMMA lens
- Clear toughened glass
- Integral control gear

**Optic****Product colour****Special finishes upon request**

**LADOR 25 (LD-50131)**

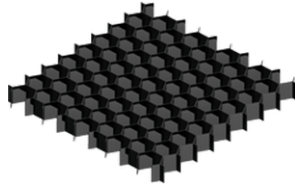
**Technical information**

<b>Material</b>	Aluminium	<b>Optic value</b>	10°, 19°, 33°, 71°, 41°x14°	<b>Operating temperature</b>	-20 °C to 40 °C
<b>Light source</b>	4 LED	<b>CCT / CRI</b>	3000K CRI80, 4000K CRI80	<b>Through wiring</b>	Single cable entry
<b>Power</b>	11 W	<b>Bug</b>	B1-U1-G0	<b>Lens / Reflector / Optic</b>	High-efficiency PMMA lens, Clear toughened glass
<b>Lumen</b>	686 - 904 lm	<b>ULR</b>	0%	<b>MacAdam Ellipse</b>	3 SDCM
<b>Efficacy</b>	62 - 82 lm/W	<b>ULOR</b>	0%	<b>Lifetime L90B10 (hours)</b>	> 120,000
<b>Driver option</b>	Integral control gear	<b>CIE flux code n°3</b>	100	<b>Lifetime L80B10 (hours)</b>	> 120,000
<b>Driver</b>	Constant current (CC)	<b>Dimming type</b>	On/Off	<b>Lifetime L80B50 (hours)</b>	> 120,000
<b>Input voltage</b>	220-240 V 50/60 Hz	<b>Product colours</b>	Black, Dark Grey, White, Matt Silver, Bronze, Concrete - Urban, Softscape - Urban, Stone - Urban, Corten - Urban, Oak - Woodland, Walnut - Woodland, Pine - Woodland	<b>Variants (On/Off)</b>	Compatible with EN/ IEC 60598-2-22: Suitable for emergency installations as central supply, non-maintained (Z0)
<b>Optic</b>	N, M, W, VW, E				
		<b>Weight</b>	1.74 kg		

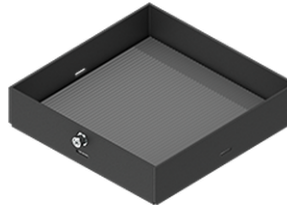
**Accessories**



Anti-glare visor  
**A53031**



Honeycomb louvre  
**A52021**



Linear spread lens  
**A51314**

Please contact the factory for technical details if you wish to use Anti-glare accessories, Colour filters, Lenses and slip glasses in combination.