

**LADOR 26** (LD-50141)**Product description**

---

Thread knuckle mounted - 121x121 mm

**Luminaire Structure**

---

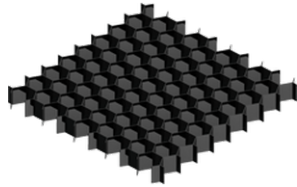
- Single cable entry
- High-efficiency PMMA lens
- Clear toughened glass
- Integral control gear

**LADOR 26 (LD-50141)****Technical information**

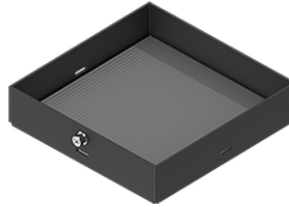
<b>Material</b>	Aluminium	<b>Driver</b>	Constant current (CC)	<b>Through wiring</b>	Single cable entry
<b>Light source</b>	9 LED	<b>Input voltage</b>	220-240 V 50/60 Hz	<b>Lens / Reflector / Optic</b>	High-efficiency PMMA lens, Clear toughened glass
<b>Power</b>	21 W	<b>Weight</b>	3 kg		
<b>Driver option</b>	Integral control gear	<b>Operating temperature</b>	-20 °C to 40 °C		

**Accessories**

Anti-glare visor  
**A53031**



Honeycomb louvre  
**A52021**



Linear spread lens  
**A51314**

Please contact the factory for technical details if you wish to use Anti-glare accessories, Colour filters, Lenses and slip glasses in combination.