

LADOR 46 (LD-50241) (Version 1)



Product description

Bracket mounted - With remote driver IP-rated - Constant voltage (CV) 24 V - 62x62 mm - Class III - RGBW



Luminaire Structure

- Die-cast aluminium housing
- Pre-treated before powder coating ensuring high corrosion resistance
- Thermal heat dissipation body
- Adjustable: Tilt 80° (Up) & 40° (Down), Rotation 350°

- Single cable entry
- Stainless steel fasteners in grade 304 with zinc flake coating (ZFC)
- Durable silicone rubber gasket
- High-efficiency PMMA lens

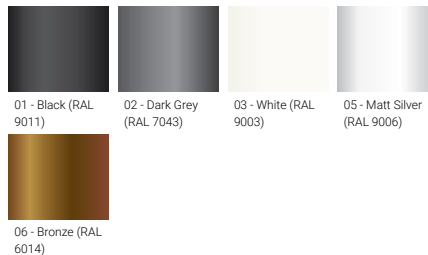
- Clear toughened glass
- Remote driver (included)

Optic

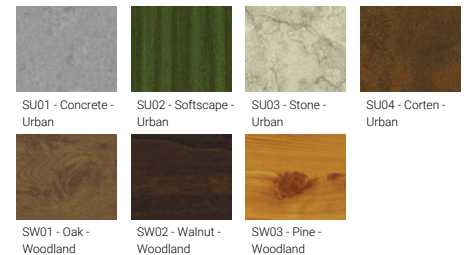


M

Product colour



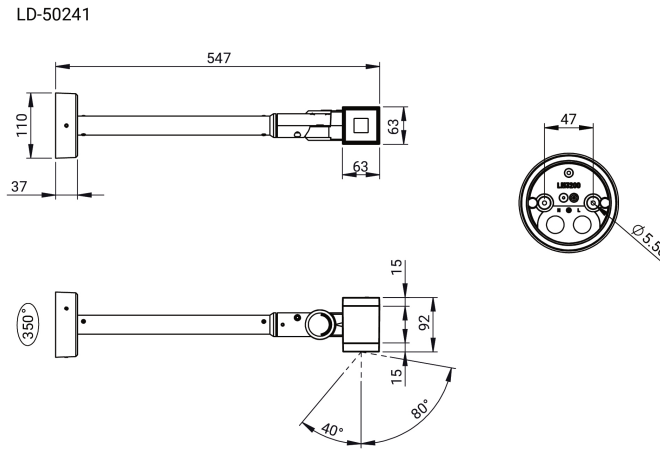
Special finishes upon request




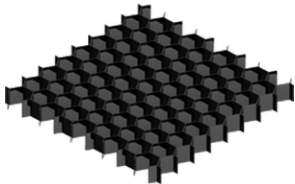


LADOR 46 (LD-50241) (Version 1)

Technical information

Material	Aluminium	Driver	Constant voltage (CV)	Product colours Black, Dark Grey, White, Matt Silver, Bronze, Concrete - Urban, Softscape - Urban, Stone - Urban, Corten - Urban, Oak - Woodland, Walnut - Woodland, Pine - Woodland	
Light source	1 LED	Input voltage	24 VDC		
Power	4 W	Optic	M		
Lumen	166 - 170 lm	Optic value	34°		
Efficacy	42 - 43 lm/W	CCT / CRI	RGBW30, RGBW40		
Driver option	Remote driver (included)	Dimming type	DMX, DMX/RDM		
Weight					1.60 kg
Operating temperature					-20 °C to 40 °C
Through wiring					Single cable entry
Lens / Reflector / Optic					High-efficiency PMMA lens, Clear toughened glass
Variants (DMX/RDM)				Compatible with EN/ IEC 60598-2-22: Suitable for emergency installations as central supply, non-maintained (Z0)	



Accessories

 <p>Anti-glare visor A52831</p>	 <p>Honeycomb louvre A51821</p>	 <p>Linear spread lens A51114</p>	 <p>DMX Control System Control-DMX</p>
--	---	--	--

LADOR 46 (LD-50241) (Version 1)

DMX/RDM Control System
Control-DMX-RDM



Ground spike
A51041

Please contact the factory for technical details if you wish to use Anti-glare accessories, Colour filters, Lenses and slip glasses in combination.