

LIGHTSOFT 2 (LH-10685-SB)**IP65****IK08****Product description**

186x186 mm - 1000 mm - Square - IK08 - With integrated security core (Anti-traffic)

**Luminaire Structure**

- Die-cast aluminium housing
- Extruded aluminium column
- Pre-treated before powder coating ensuring high corrosion resistance
- Single cable entry
- One IP68 connector supplied with 0.2 m of 3x1.0 sqmm outdoor cable
- Stainless steel fasteners in grade 304 with zinc flake coating (ZFC)
- Durable silicone rubber gasket
- Clear UV-stabilised polycarbonate diffuser
- Anodised, high-purity aluminium reflector
- Integral control gear

Optic**G**

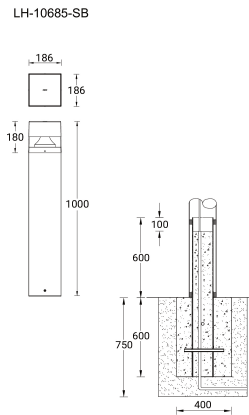
LIGHTSOFT 2 (LH-10685-SB)

Technical information

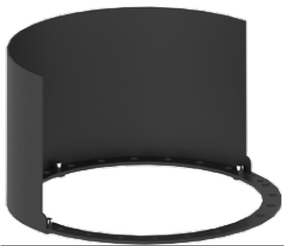
Light source	12 LED
Power	27 W
Lumen	1020 - 1050 lm
Efficacy	38 - 39 lm/W
Driver option	Integral control gear
Driver	Constant current (CC)
Input voltage	220-240 V 50/60 Hz

Optic	G
Optic value	360°
CCT / CRI	3000K CRI80, 4000K CRI80
Bug	B1-U3-G1
ULR	10%
ULOR	10%
CIE flux code n°3	72

Dimming type	On/Off, 1-10V, DALI
Weight	9.4 kg
Operating temperature	-20 °C to 40 °C
Cable	One IP68 connector supplied with 0.2 m of 3x1.0 sqmm outdoor cable
Through wiring	Single cable entry
Lens / Reflector / Optic	Clear UV-stabilised polycarbonate diffuser, Anodised, high-purity aluminium reflector
Variants (1-10V)	Compatible with EN/ IEC 60598-2-22: Suitable for emergency installations as central supply, non-maintained (Z0)



Accessories



Light shield 180°
A10731



Light shield 90°
A10831



Power connection box (IP65)
modification upon request
POWER-BOX-IP65



DALI Control System
Control-DALI

Please contact the factory for technical details if you wish to use Anti-glare accessories, Colour filters, Lenses and slip glasses in combination.