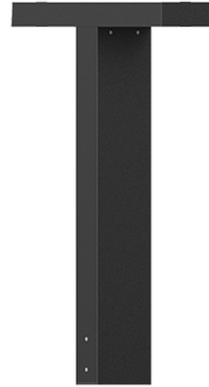


LIGHT LINEAR PT 2 (LI-10032-2MS)**IP65****IK10****Product description**

200x80 mm - 1000 mm - 2 sides - With integrated motion sensor

**Luminaire Structure**

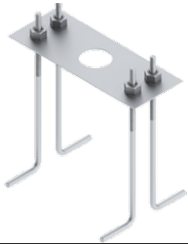
- Single cable entry
- One IP68 connector supplied with 0.2 m of 3x1.0 sqmm outdoor cable
- Clear toughened glass
- High-efficiency PMMA lens
- Integral control gear

LIGHT LINEAR PT 2 (LI-10032-2MS)

Technical information

| | | | | | |
|----------------------|-----------------------|------------------------------|-----------------------|---------------------------------|--|
| Material | Aluminium | Driver | Constant current (CC) | Cable | One IP68 connector supplied with 0.2 m of 3x1.0 sqmm outdoor cable |
| Light source | 2 x 24 LED | Input voltage | 220-240 V 50/60 Hz | Through wiring | Single cable entry |
| Power | 108 W | Weight | 15.8 kg | Lens / Reflector / Optic | Clear toughened glass, High-efficiency PMMA lens |
| Driver option | Integral control gear | Operating temperature | -20 °C to 40 °C | | |

Accessories



Anchor bolt
A11191



Motion sensor - PIR - DALI -
Lunatone - DALI CS Corridor -
IP65
A69291



DALI Control System
Control-DALI



Lunatone - DALI PS2 30mA
A69391