

MALMO 4 (MAL-90011)



Product description

Down - 390 mm



Luminaire Structure

- Extruded aluminium bended profile with powder coating
- Stainless steel fasteners in grade 316
- Stainless steel, adjustable, suspension (1.5 m) complete with electrical wires in white for mounting
- PMMA diffuser with Opal (UGR <19) and micro prismatic (UGR <13) options for better glare control

- Up and down light distribution options
- Passive thermal management
- Integral control gear
- Wireless control available through Bluetooth connection

- Daylight and occupancy sensor options
- Emergency module (1 or 3 hours) is available upon request with 3 options (BASIC, SELF-TEST, PRO-DALI)

Optic



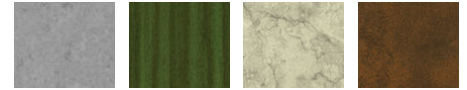
P

Product colour



01 - Black (RAL 9011) 03 - White (RAL 9003) 05 - Matt Silver (RAL 9006)

Special finishes upon request



SU01 - Concrete - Urban SU02 - Softscape - Urban SU03 - Stone - Urban SU04 - Corten - Urban



SW01 - Oak - Woodland SW02 - Walnut - Woodland SW03 - Pine - Woodland

MALMO 4 (MAL-90011)

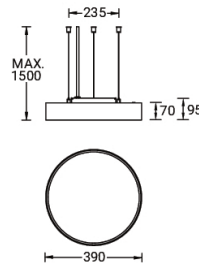
Technical information

| | |
|----------------------|-----------------------|
| Material | Aluminium |
| Light source | 276 LED |
| Power | 26 W |
| Lumen | 2514 - 3006 lm |
| Efficacy | 84 - 100 lm/W |
| Driver option | Integral control gear |
| Driver | Constant current (CC) |

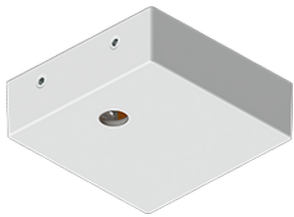
| | |
|----------------------|--------------------------|
| Input voltage | 220-240 V 50/60 Hz |
| Optic | O, P |
| Optic value | 107°, 94° |
| CCT / CRI | 3000K CRI80, 4000K CRI80 |
| Bug | B1-U0-G1 |
| ULR | 0% |
| ULOR | 0% |

| | |
|-------------------------------|---|
| CIE flux code n°3 | 96, 98 |
| Dimming type | On/Off, 1-10V, DALI |
| Product colours | Black, White, Matt Silver, Concrete - Urban, Softscape - Urban, Stone - Urban, Corten - Urban, Oak - Woodland, Walnut - Woodland, Pine - Woodland |
| Weight | 2.6 kg |
| Operating temperature | -20 °C to 40 °C |
| Variants (1-10V, DALI) | Compatible with EN/ IEC 60598-2-22: Suitable for emergency installations as central supply, non-maintained (Z0) |

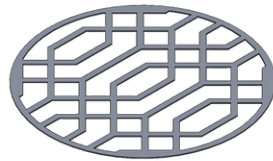
MAL-90011



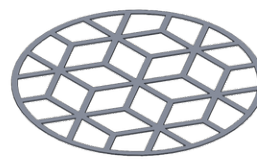
Accessories



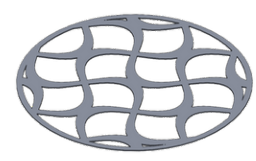
Supply cable surface mounting box
A80981



Decorative pattern - Type A for MALMO 400 mm
A90921

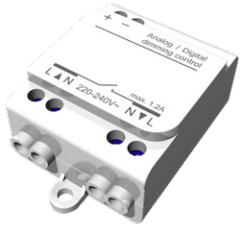


Decorative pattern - Type B for MALMO 400 mm
A92321



Decorative pattern - Type C for MALMO 400 mm
A93721

MALMO 4 (MAL-90011)



Wireless bluetooth converter
A90291



Xpress wireless switch
A90591



DALI Control System
Control-DALI