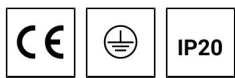


MALMO 4 (MAL-90013)



Product description

Down - 390 mm - TW



Luminaire Structure

- Extruded aluminium bended profile with powder coating
- Stainless steel fasteners in grade 316
- Stainless steel, adjustable, suspension (1.5 m) complete with electrical wires in white for mounting
- PMMA diffuser with Opal (UGR <19) and micro prismatic (UGR <13) options for better glare control

- Up and down light distribution options
- Passive thermal management
- Integral control gear
- Wireless control available through Bluetooth connection

- Daylight and occupancy sensor options
- Emergency module (1 or 3 hours) is available upon request with 3 options (BASIC, SELF-TEST, PRO-DALI)

Optic



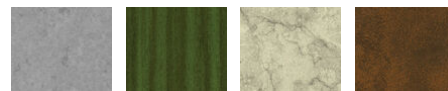
P

Product colour



01 - Black (RAL 9011) 03 - White (RAL 9003) 05 - Matt Silver (RAL 9006)

Special finishes upon request



SU01 - Concrete - Urban SU02 - Softscape - Urban SU03 - Stone - Urban SU04 - Corten - Urban



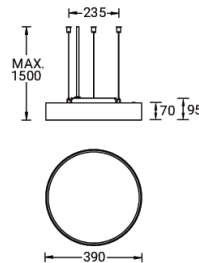
SW01 - Oak - Woodland SW02 - Walnut - Woodland SW03 - Pine - Woodland

MALMO 4 (MAL-90013)

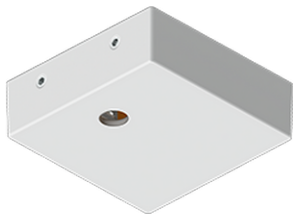
Technical information

Material	Aluminium	Input voltage	220-240 V 50/60 Hz	CIE flux code n°3	96, 97
Light source	552 LED	Optic	O, P	Dimming type	DALI
Power	30 W	Optic value	107°, 94°	Product colours	Black, White, Matt Silver, Concrete - Urban, Softscape - Urban, Stone - Urban, Corten - Urban, Oak - Woodland, Walnut - Woodland, Pine - Woodland
Lumen	3054 - 3446 lm	CCT / CRI	TW (2700K - 6500K)		
Efficacy	56 - 63 lm/W	Bug	B1-U0-G1, B2-U0-G1		
Driver option	Integral control gear	ULR	0%	Weight	2.6 kg
Driver	Constant current (CC)	ULOR	0%	Operating temperature	-20 °C to 40 °C
				Variants (DALI)	Compatible with EN/ IEC 60598-2-22: Suitable for emergency installations as central supply, non-maintained (Z0)

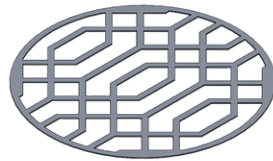
MAL-90013



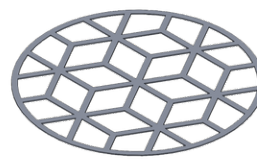
Accessories



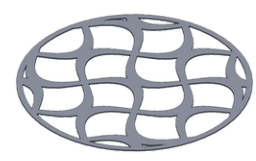
Supply cable surface mounting box
A80981



Decorative pattern - Type A for MALMO 400 mm
A90921

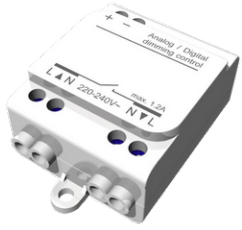


Decorative pattern - Type B for MALMO 400 mm
A92321



Decorative pattern - Type C for MALMO 400 mm
A93721

MALMO 4 (MAL-90013)



Wireless bluetooth converter
A90291



Xpress wireless switch
A90591



DALI Control System
Control-DALI